

FXL18 Rabbit pAb

CatalogNo: YT7528

Key Features

Host Species

- Rabbit

Reactivity

- Human

Applications

- WB

MW

- 89kD (Calculated)

Isotype

- IgG

Recommended Dilution Ratios

WB 1:500-2000

Storage

Storage* -15°C to -25°C/1 year(Do not lower than -25°C)

Formulation Liquid in PBS containing 50% glycerol, 0.5% BSA and 0.02% sodium azide.

Basic Information

Clonality Polyclonal

Immunogen Information

Immunogen Synthesized peptide derived from human FXL18 AA range: 7-57

Specificity This antibody detects endogenous levels of FXL18 at Human

Target Information

Gene name FBXL18 FBL18

Protein Name FXL18

Organism

Gene ID

UniProt ID

Human

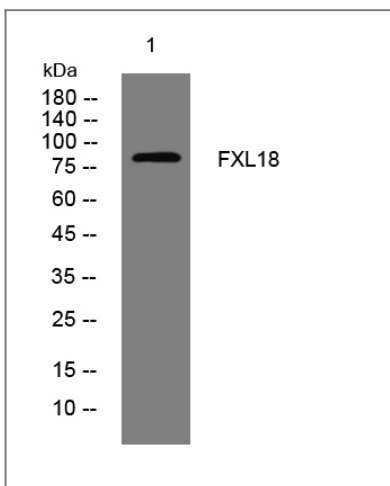
[80028](#);

[Q96ME1](#);

Function

Function:Substrate-recognition component of the SCF (SKP1-CUL1-F-box protein)-type E3 ubiquitin ligase complex.,similarity:Contains 1 F-box domain.,similarity:Contains 3 LRR (leucine-rich) repeats.,subunit:Directly interacts with SKP1A and CUL1.,

Validation Data



Western blot analysis of lysates from HpeG2 cells, primary antibody was diluted at 1:1000, 4°over night

Contact information

Orders: order@immunoway.com
Support: tech@immunoway.com
Telephone: 877-594-3616 (Toll Free), 408-747-0185
Website: <http://www.immunoway.com>
Address: 2200 Ringwood Ave San Jose, CA 95131 USA



Please scan the QR code to access additional product information:
FXL18 Rabbit pAb

For Research Use Only. Not for Use in Diagnostic Procedures.

[Antibody](#) | [ELISA Kits](#) | [Protein](#) | [Reagents](#)