

LRRC3 Rabbit pAb

CatalogNo: YT7392

Key Features

Host Species

- Rabbit

Reactivity

- Human, Mouse, Rat

Applications

- WB, IHC

MW

- 28kD (Calculated)

Isotype

- IgG

Recommended Dilution Ratios

WB 1:500-2000

IHC 1:50-300

Storage

Storage* -15°C to -25°C/1 year (Do not lower than -25°C)

Formulation Liquid in PBS containing 50% glycerol, 0.5% BSA and 0.02% sodium azide.

Basic Information

Clonality Polyclonal

Immunogen Information

Immunogen Synthesized peptide derived from human LRRC3 AA range: 110-160

Specificity This antibody detects endogenous levels of LRRC3 at Human/Mouse/Rat

Target Information

Gene name LRRC3 C21orf102 LRRC3A UNQ9233/PRO31982

Protein Name LRRC3

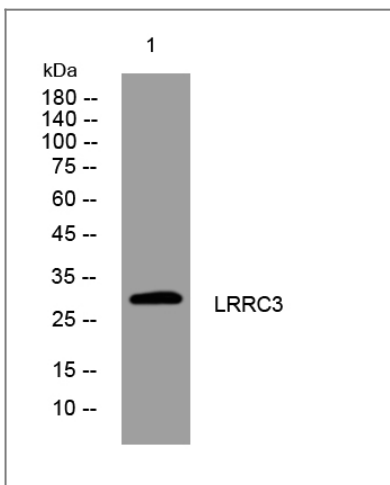
Organism	Gene ID	UniProt ID
Human	81543 ;	Q9BY71 ;
Mouse	237387 ;	P59034 ;
Rat	246773 ;	P59035 ;

Cellular Localization Membrane ; Single-pass membrane protein .

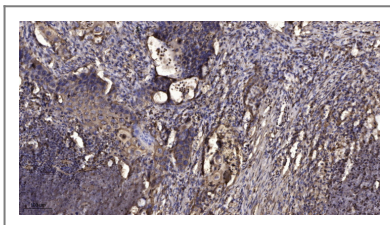
Tissue specificity Widely expressed; detected in testis, lung, small intestine, breast, brain, heart, bone marrow, placenta, colon, fetal brain, liver, fetal liver, thymus, salivary gland, spinal cord, spleen, trachea and adrenal gland.

Function similarity:Belongs to the LRRC3 family.,similarity:Contains 3 LRR (leucine-rich) repeats.,tissue specificity:Widely expressed; detected in testis, lung, small intestine, breast, brain, heart, bone marrow, placenta, colon, fetal brain, liver, fetal liver, thymus, salivary gland, spinal cord, spleen, trachea and adrenal gland.,

Validation Data



Western blot analysis of lysates from SH-SY5Y cells, primary antibody was diluted at 1:1000, 4° over night



Immunohistochemical analysis of paraffin-embedded human Squamous cell carcinoma of lung. 1, Antibody was diluted at 1:200(4° overnight). 2, Tris-EDTA,pH9.0 was used for antigen retrieval. 3,Secondary antibody was diluted at 1:200(room temperature, 45min).

Contact information

Orders: order@immunoway.com
Support: tech@immunoway.com
Telephone: 877-594-3616 (Toll Free), 408-747-0185
Website: http://www.immunoway.com
Address: 2200 Ringwood Ave San Jose, CA 95131 USA



Please scan the QR code
to access additional
product information:
LRRC3 Rabbit pAb

For Research Use Only. Not for Use in Diagnostic Procedures.

[Antibody](#) | [ELISA Kits](#) | [Protein](#) | [Reagents](#)