

F102A Rabbit pAb

CatalogNo: YT7315

Key Features

Host Species

- Rabbit

Reactivity

- Human, Mouse

Applications

- WB

MW

- 42kD (Calculated)

Isotype

- IgG

Recommended Dilution Ratios

WB 1:500-2000

Storage

Storage* -15°C to -25°C/1 year (Do not lower than -25°C)

Formulation Liquid in PBS containing 50% glycerol, 0.5% BSA and 0.02% sodium azide.

Basic Information

Clonality Polyclonal

Immunogen Information

Immunogen Synthesized peptide derived from human F102A AA range: 72-122

Specificity This antibody detects endogenous levels of F102A at Human/Mouse

Target Information

Gene name FAM102A C9orf132 EEIG1

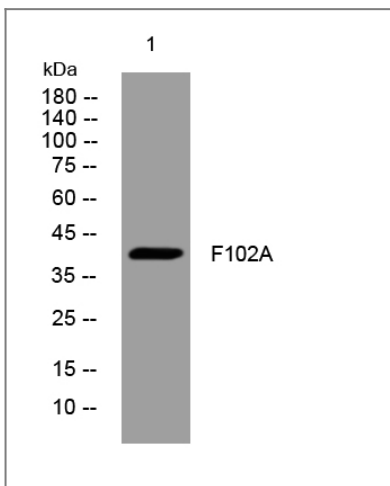
Protein Name F102A

Organism	Gene ID	UniProt ID
Human	399665 ;	Q5T9C2 ;
Mouse	98952 ;	Q78T81 ;

Function

Function:May play a role in estrogen action.,induction:By 17-beta-estradiol but also by a group of natural and synthetic estrogens as well as by estrogenic environmental compounds. Repressed by the antiestrogen 4-hydroxy-tamoxifen.,similarity:Belongs to the FAM102 family.,

Validation Data



Western blot analysis of lysates from HpeG2 cells, primary antibody was diluted at 1:1000, 4°over night

Contact information

Orders: order@immunoway.com
Support: tech@immunoway.com
Telephone: 877-594-3616 (Toll Free), 408-747-0185
Website: <http://www.immunoway.com>
Address: 2200 Ringwood Ave San Jose, CA 95131 USA



Please scan the QR code to access additional product information:
F102A Rabbit pAb

For Research Use Only. Not for Use in Diagnostic Procedures.

[Antibody](#) | [ELISA Kits](#) | [Protein](#) | [Reagents](#)