

## MTCH1 Rabbit pAb

CatalogNo: YT7114

### Key Features

#### Host Species

- Rabbit

#### Reactivity

- Human, Mouse

#### Applications

- WB, ELISA, IHC

#### MW

- 43kD (Calculated)

#### Isotype

- IgG

### Recommended Dilution Ratios

**WB 1:500-2000**

**IHC 1:50-300**

**ELISA 1:2000-20000**

### Storage

**Storage\*** -15°C to -25°C/1 year (Do not lower than -25°C)

**Formulation** Liquid in PBS containing 50% glycerol, 0.5% BSA and 0.02% sodium azide.

### Basic Information

**Clonality** Polyclonal

### Immunogen Information

**Immunogen** Synthesized peptide derived from human MTCH1 AA range: 235-285

**Specificity** This antibody detects endogenous levels of MTCH1 at Human/Mouse

### Target Information

**Gene name** MTCH1 PSAP CGI-64 UNQ1871/PRO4314

**Protein Name** MTCH1

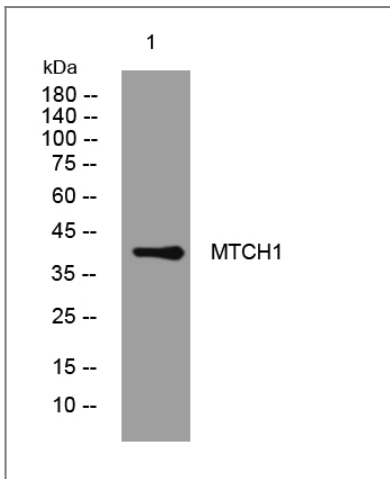
Organism	Gene ID	UniProt ID
Human	<a href="#">23787</a> ;	<a href="#">Q9NZJ7</a> ;
Mouse	<a href="#">56462</a> ;	<a href="#">Q791T5</a> ;

**Cellular Localization** Mitochondrion outer membrane ; Multi-pass membrane protein .

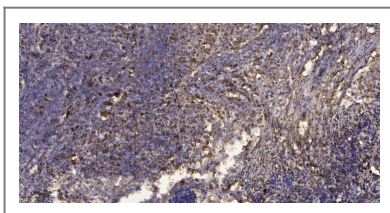
**Tissue specificity** Widely expressed with a predominant expression in brain.

**Function** Function:Potential mitochondrial transporter. May play a role in apoptosis.,similarity:Belongs to the mitochondrial carrier family.,similarity:Contains 2 Solcar repeats.,subunit:Interacts with PSEN1.,tissue specificity:Widely expressed with a predominant expression in brain.,

## Validation Data



Western blot analysis of lysates from A431 cells, primary antibody was diluted at 1:1000, 4° over night



Immunohistochemical analysis of paraffin-embedded human Squamous cell carcinoma of lung. 1, Antibody was diluted at 1:200(4° overnight). 2, Tris-EDTA,pH9.0 was used for antigen retrieval. 3,Secondary antibody was diluted at 1:200(room temperature, 45min).

## Contact information

Orders: [order@immunoway.com](mailto:order@immunoway.com)  
Support: [tech@immunoway.com](mailto:tech@immunoway.com)  
Telephone: 877-594-3616 (Toll Free), 408-747-0185  
Website: <http://www.immunoway.com>  
Address: 2200 Ringwood Ave San Jose, CA 95131 USA



Please scan the QR code to access additional product information:  
**MTCH1 Rabbit pAb**

