

RBP2 Rabbit pAb

CatalogNo: YT7076

Key Features

Host Species

- Rabbit

Reactivity

- Human, Mouse

Applications

- IHC, IF

MW

- 355kD (Calculated)

Isotype

- IgG

Recommended Dilution Ratios

IHC 1:50-200**IF 1:50-200**

Storage

Storage* -15°C to -25°C/1 year (Do not lower than -25°C)**Formulation** Liquid in PBS containing 50% glycerol, 0.5% BSA and 0.02% sodium azide.

Basic Information

Clonality Polyclonal

Immunogen Information

Immunogen Synthesized peptide derived from human RBP2 AA range: 108-158**Specificity** This antibody detects endogenous levels of RBP2 at Human/Mouse

Target Information

Gene name RANBP2 NUP358

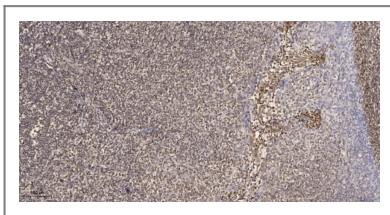
Protein Name RBP2

Organism	Gene ID	UniProt ID
Human	5903 ;	P49792 ;
Mouse	19386 ;	Q9ERU9 ;

Cellular Localization Nucleus . Nucleus membrane . Nucleus, nuclear pore complex . Nucleus envelope . Detected in diffuse and discrete intranuclear foci (PubMed:11839768). Cytoplasmic filaments (PubMed:7775481). .

Function Disease:Defects in RANBP2 are the cause of susceptibility to acute necrotizing encephalopathy type 1 (ANE1) [MIM:608033]. Acute necrotizing encephalopathy (ANE) is a rapidly progressive encephalopathy, seizures, and coma that can occur within days in otherwise healthy children after common viral infections such as influenza and parainfluenza, without evidence of viral infection of the brain or inflammatory cell infiltration. Brain T2-weighted magnetic resonance imaging reveals characteristic symmetric lesions present in the thalami, pons, and brainstem.,Domain:Contains F-X-F-G repeats.,Function:E3 SUMO-protein ligase which facilitates SUMO1 and SUMO2 conjugation by UBE2I. Involved in transport factor (Ran-GTP, karyopherin)-mediated protein import via the F-G repeat-containing domain which acts as a docking site for substrates. Could also have isomerase or chaperone activity and may bind RNA or DNA. Component of the nuclear export pathway. Specific docking site for the nuclear export factor exportin-1.,pathway:Protein modification; protein sumoylation.,PTM:Polyubiquitinated by PARK2, which leads to proteasomal degradation.,similarity:Contains 1 PPIase cyclophilin-type domain.,similarity:Contains 1 TPR repeat.,similarity:Contains 4 RanBD1 domains.,similarity:Contains 8 RanBP2-type zinc fingers.,subcellular location:Cytoplasmic filaments.,subunit:Forms a tight complex with RANBP1 and UBE2I. Interacts with SUMO1 but not SUMO2. Interacts with PARK2. Interacts with sumoylated RANGAP1.,

Validation Data



Immunohistochemical analysis of paraffin-embedded human tonsil. 1, Antibody was diluted at 1:200(4° overnight). 2, Tris-EDTA,pH9.0 was used for antigen retrieval. 3,Secondary antibody was diluted at 1:200(room temperature, 45min).

Contact information

Orders: order@immunoway.com
Support: tech@immunoway.com
Telephone: 877-594-3616 (Toll Free), 408-747-0185
Website: <http://www.immunoway.com>
Address: 2200 Ringwood Ave San Jose, CA 95131 USA



Please scan the QR code to access additional product information:
RBP2 Rabbit pAb

