

## SIL1 Rabbit pAb

CatalogNo: YT7002

### Key Features

#### Host Species

- Rabbit

#### Reactivity

- Human, Mouse, Rat

#### Applications

- WB, ELISA, IHC

#### MW

- 51kD (Calculated)

#### Isotype

- IgG

### Recommended Dilution Ratios

WB 1:500-2000

IHC 1:50-300

ELISA 1:2000-20000

### Storage

#### Storage\*

-15°C to -25°C/1 year(Do not lower than -25°C)

#### Formulation

Liquid in PBS containing 50% glycerol, 0.5% BSA and 0.02% sodium azide.

### Basic Information

#### Clonality

Polyclonal

### Immunogen Information

#### Immunogen

Synthesized peptide derived from human SIL1 AA range: 169-219

#### Specificity

This antibody detects endogenous levels of SIL1 at Human/Mouse/Rat

### Target Information

#### Gene name

SIL1 UNQ545/PRO836

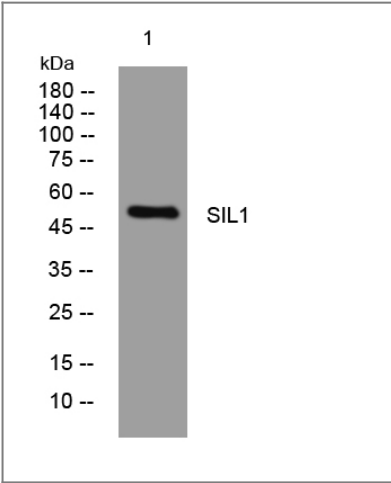
<b>Protein Name</b>	SIL1		
	<b>Organism</b>	<b>Gene ID</b>	<b>UniProt ID</b>
	Human	<a href="#">64374;</a>	<a href="#">Q9H173;</a>
	Mouse	<a href="#">81500;</a>	<a href="#">Q9EPK6;</a>
	Rat	<a href="#">291673;</a>	<a href="#">Q6P6S4;</a>

**Cellular Localization** Endoplasmic reticulum lumen .

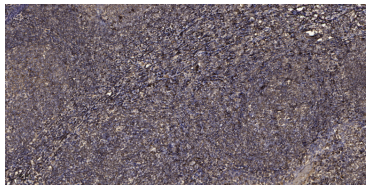
**Tissue specificity** Highly expressed in tissues which produce large amounts of secreted proteins such as kidney, liver and placenta. Also expressed in colon, heart, lung, ovary, pancreas, peripheral leukocyte, prostate, spleen and thymus. Expressed at low levels throughout the brain.

**Function** developmental stage:Expressed in fetal kidney, fetal lung, fetal liver and at low levels in fetal brain.,Disease:Defects in SIL1 are a cause of Marinesco-Sjogren syndrome (MSS) [MIM:248800]. MSS is an autosomal recessive multisystem disorder which is characterized by cerebellar ataxia due to cerebellar atrophy, with Purkinje and granule cell loss and myopathy featuring marked muscle replacement with fat and connective tissue. Other cardinal features include bilateral cataracts, hypergonadotrophic hypogonadism and mild to severe mental retardation. Skeletal abnormalities, short stature, dysarthria, strabismus and nystagmus are also frequent findings. Mutational inactivation of this protein may result in ER stress-induced cell death signaling or malfunctioning chaperone machineries that mishandle client proteins which are critical for the organs targeted in MSS.,Function:Required for protein translocation and folding in the endoplasmic reticulum (ER). Functions as a nucleotide exchange factor for the ER luminal chaperone HSPA5.,PTM:N-glycosylated.,similarity:Belongs to the SIL1 family.,subunit:Interacts with HSPA5.,tissue specificity:Highly expressed in tissues which produce large amounts of secreted proteins such as kidney, liver and placenta. Also expressed in colon, heart, lung, ovary, pancreas, peripheral leukocyte, prostate, spleen and thymus. Expressed at low levels throughout the brain.,

## Validation Data



Western blot analysis of lysates from A431 cells, primary antibody was diluted at 1:1000, 4°over night



Immunohistochemical analysis of paraffin-embedded human tonsil. 1, Antibody was diluted at 1:200(4° overnight). 2, Tris-EDTA,pH9.0 was used for antigen retrieval. 3,Secondary antibody was diluted at 1:200(room temperature, 45min).

## | Contact information

Orders: [order@immunoway.com](mailto:order@immunoway.com)  
Support: [tech@immunoway.com](mailto:tech@immunoway.com)  
Telephone: 877-594-3616 (Toll Free), 408-747-0185  
Website: <http://www.immunoway.com>  
Address: 2200 Ringwood Ave San Jose, CA 95131 USA



Please scan the QR code  
to access additional  
product information:  
**SIL1 Rabbit pAb**

---

For Research Use Only. Not for Use in Diagnostic Procedures.

[Antibody](#) | [ELISA Kits](#) | [Protein](#) | [Reagents](#)