

## DRAM2 Rabbit pAb

CatalogNo: YT6810

### Key Features

**Host Species**

- Rabbit

**Reactivity**

- Human, Mouse, Rat

**Applications**

- WB

**MW**

- 29kD (Calculated)

**Isotype**

- IgG

### Recommended Dilution Ratios

WB 1:500-2000

### Storage

**Storage\*** -15°C to -25°C/1 year (Do not lower than -25°C)**Formulation** Liquid in PBS containing 50% glycerol, 0.5% BSA and 0.02% sodium azide.

### Basic Information

**Clonality** Polyclonal

### Immunogen Information

**Immunogen** Synthesized peptide derived from human DRAM2 AA range: 57-107**Specificity** This antibody detects endogenous levels of DRAM2 at Human/Mouse/Rat

### Target Information

**Gene name** DRAM2 TMEM77 PSEC0031 UNQ154/PRO180

**Protein Name** DRAM2

Organism	Gene ID	UniProt ID
Human	<a href="#">128338</a> ;	<a href="#">Q6UX65</a> ;
Mouse	<a href="#">67171</a> ;	<a href="#">Q9CR48</a> ;
Rat	<a href="#">362011</a> ;	<a href="#">Q5BK09</a> ;

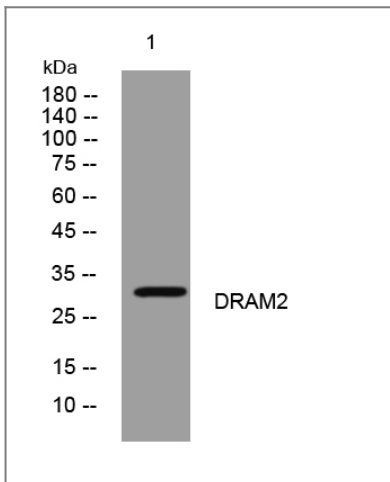
**Cellular Localization**

Lysosome membrane ; Multi-pass membrane protein . Photoreceptor inner segment . Apical cell membrane . Localized to photoreceptor inner segments and to the apical surface of retinal pigment epithelial cells. .

**Tissue specificity**

Expression is down-regulated in ovarian tumors (at protein level). Widely expressed with highest levels in placenta and heart. Expressed in the retina. Not detected in brain or thymus.

## Validation Data



Western blot analysis of lysates from THP-1 cells, primary antibody was diluted at 1:1000, 4°over night

## Contact information

Orders: [order@immunoway.com](mailto:order@immunoway.com)  
Support: [tech@immunoway.com](mailto:tech@immunoway.com)  
Telephone: 877-594-3616 (Toll Free), 408-747-0185  
Website: <http://www.immunoway.com>  
Address: 2200 Ringwood Ave San Jose, CA 95131 USA



Please scan the QR code to access additional product information:  
**DRAM2 Rabbit pAb**