

SMS1 Rabbit pAb

CatalogNo: YT6800

Key Features

Host Species

- Rabbit

Reactivity

- Human, Mouse, Rat

Applications

- WB, ELISA, IHC

MW

- 46kD (Calculated)

Isotype

- IgG

Recommended Dilution Ratios

WB 1:500-2000

IHC 1:50-300

ELISA 1:2000-20000

Storage

Storage*

-15°C to -25°C/1 year (Do not lower than -25°C)

Formulation

Liquid in PBS containing 50% glycerol, 0.5% BSA and 0.02% sodium azide.

Basic Information

Clonality

Polyclonal

Immunogen Information

Immunogen

Synthesized peptide derived from human SMS1 AA range: 156-206

Specificity

This antibody detects endogenous levels of SMS1 at Human/Mouse/Rat

Target Information

Gene name

SGMS1 MOB SMS1 TMEM23

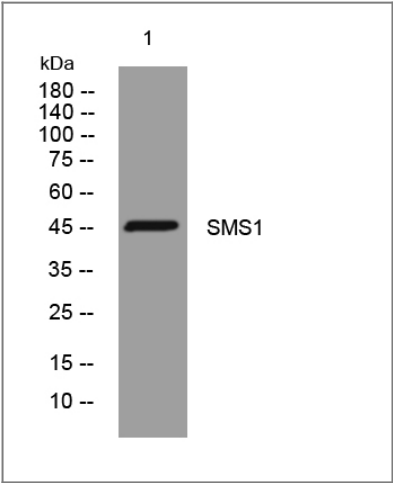
Protein Name	SMS1		
	Organism	Gene ID	UniProt ID
	Human	259230 ;	Q86VZ5 ;
	Mouse	208449 ;	Q8VCQ6 ;
	Rat	353229 ;	Q7TSX5 ;

Cellular Localization Golgi apparatus membrane ; Multi-pass membrane protein .

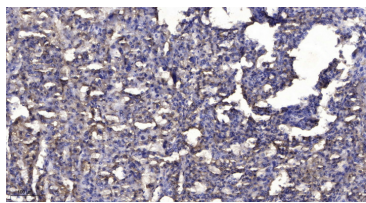
Tissue specificity Brain, heart, kidney, liver, muscle and stomach.

Function Catalytic activity:A ceramide + a phosphatidylcholine = a sphingomyelin + a 1,2-diacyl-sn-glycerol.,enzyme regulation:Inhibited by bacterial PC-phospholipase C inhibitor D609.,Function:Bidirectional lipid cholinephosphotransferase capable of converting phosphatidylcholine (PC) and ceramide to sphingomyelin (SM) and diacylglycerol (DAG) and vice versa. Direction is dependent on the relative concentrations of DAG and ceramide as phosphocholine acceptors. Directly and specifically recognizes the choline head group on the substrate. Also requires two fatty chains on the choline-P donor molecule in order to be recognized efficiently as a substrate. Does not function strictly as a SM synthase. Suppresses BAX-mediated apoptosis and also prevents cell death in response to stimuli such as hydrogen peroxide, osmotic stress, elevated temperature and exogenously supplied sphingolipids. May protect against cell death by reversing the stress-inducible increase in levels of proapoptotic ceramide. Required for cell growth.,miscellaneous:Overexpression of the human protein in mouse causes increased non-HDL-sphingomyelin and non-HDL cholesterol levels, decreased HDL-sphingomyelin and HDL-cholesterol levels and increases lipoprotein atherogenic potential.,sequence Caution:Unusual initiator. The initiator methionine is coded by a non-canonical CTG leucine codon.,similarity:Belongs to the sphingomyelin synthase family.,similarity:Contains 1 SAM (sterile alpha motif) domain.,tissue specificity:Brain, heart, kidney, liver, muscle and stomach.,

| Validation Data



Western blot analysis of lysates from KB cells, primary antibody was diluted at 1:1000, 4°over night



Immunohistochemical analysis of paraffin-embedded human liver cancer. 1, Antibody was diluted at 1:200(4° overnight). 2, Tris-EDTA,pH9.0 was used for antigen retrieval. 3,Secondary antibody was diluted at 1:200(room temperature, 45min).

| Contact information

Orders: order@immunoway.com
Support: tech@immunoway.com
Telephone: 877-594-3616 (Toll Free), 408-747-0185
Website: <http://www.immunoway.com>
Address: 2200 Ringwood Ave San Jose, CA 95131 USA



Please scan the QR code
to access additional
product information:
SMS1 Rabbit pAb

For Research Use Only. Not for Use in Diagnostic Procedures.

[Antibody](#) | [ELISA Kits](#) | [Protein](#) | [Reagents](#)