

## ABCAB Rabbit pAb

CatalogNo: YT6619

### Key Features

#### Host Species

- Rabbit

#### Reactivity

- Human, Mouse, Rat

#### Applications

- WB

#### MW

- 17kD (Calculated)

#### Isotype

- IgG

### Recommended Dilution Ratios

WB 1:500-2000

### Storage

**Storage\*** -15°C to -25°C/1 year (Do not lower than -25°C)

**Formulation** Liquid in PBS containing 50% glycerol, 0.5% BSA and 0.02% sodium azide.

### Basic Information

**Clonality** Polyclonal

### Immunogen Information

**Immunogen** Synthesized peptide derived from human ABCAB AA range: 45-95

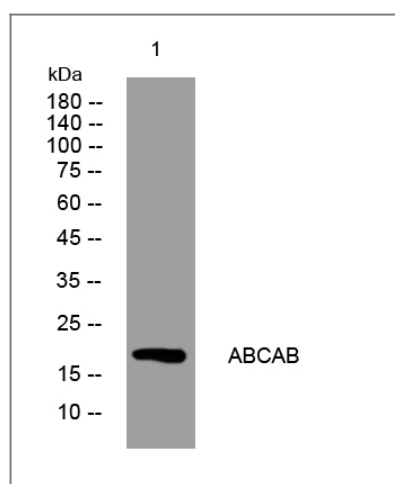
**Specificity** This antibody detects endogenous levels of ABCAB at Human

### Target Information

**Gene name** ABCA11P ABCA11

<b>Protein Name</b>	ABCAB		
	<b>Organism</b>	<b>Gene ID</b>	<b>UniProt ID</b>
	Human		<a href="#">Q4W5N1</a> ;
<b>Cellular Localization</b>	integral component of membrane,		
<b>Function</b>	Caution:In contrast to other members of the family, it is much shorter and lacks ABC transporter domains. Defined as a pseudogene by HGNC. However, proteomic data on a specific peptide from PubMed:17924679 suggest the existence of this protein.,similarity:Belongs to the ABC transporter family. ABCA subfamily.,		

## Validation Data



Western blot analysis of lysates from U2OS cells, primary antibody was diluted at 1:1000, 4°over night

## Contact information

Orders: [order@immunoway.com](mailto:order@immunoway.com)  
 Support: [tech@immunoway.com](mailto:tech@immunoway.com)  
 Telephone: 877-594-3616 (Toll Free), 408-747-0185  
 Website: <http://www.immunoway.com>  
 Address: 2200 Ringwood Ave San Jose, CA 95131 USA



Please scan the QR code to access additional product information:  
**ABCAB Rabbit pAb**

For Research Use Only. Not for Use in Diagnostic Procedures.

[Antibody](#) | [ELISA Kits](#) | [Protein](#) | [Reagents](#)