

ER6L2 Rabbit pAb

CatalogNo: YT6605

Key Features

Host Species

- Rabbit

Reactivity

- Human, Mouse

Applications

- WB

MW

- 58kD (Calculated)

Isotype

- IgG

Recommended Dilution Ratios

WB 1:500-2000

Storage

Storage* -15°C to -25°C/1 year (Do not lower than -25°C)

Formulation Liquid in PBS containing 50% glycerol, 0.5% BSA and 0.02% sodium azide.

Basic Information

Clonality Polyclonal

Immunogen Information

Immunogen Synthesized peptide derived from human ER6L2 AA range: 193-243

Specificity This antibody detects endogenous levels of ER6L2 at Human/Mouse

Target Information

Gene name ERCC6L2 C9orf102

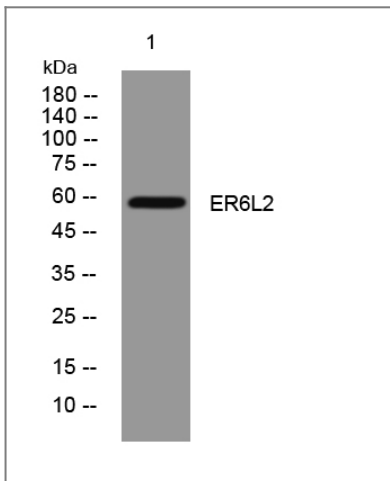
Protein Name ER6L2

Organism	Gene ID	UniProt ID
Human		A4D997 ;
Mouse	76251 ;	Q6DI94 ;

Cellular Localization nucleus,mitochondrion,microtubule organizing center,

Function sequence Caution:Translation N-terminally extended.,similarity:Belongs to the SNF2/RAD54 helicase family.,similarity:Contains 1 helicase ATP-binding domain.,similarity:Contains 1 helicase C-terminal domain.,

Validation Data



Western blot analysis of lysates from 293T cells, primary antibody was diluted at 1:1000, 4°over night

Contact information

Orders: order@immunoway.com
Support: tech@immunoway.com
Telephone: 877-594-3616 (Toll Free), 408-747-0185
Website: <http://www.immunoway.com>
Address: 2200 Ringwood Ave San Jose, CA 95131 USA



Please scan the QR code to access additional product information:
ER6L2 Rabbit pAb