

## HPLN3 Rabbit pAb

CatalogNo: YT6469

### Key Features

#### Host Species

- Rabbit

#### Reactivity

- Human, Mouse

#### Applications

- WB

#### MW

- 40kD (Calculated)

#### Isotype

- IgG

### Recommended Dilution Ratios

WB 1:500-2000

### Storage

**Storage\*** -15°C to -25°C/1 year (Do not lower than -25°C)

**Formulation** Liquid in PBS containing 50% glycerol, 0.5% BSA and 0.02% sodium azide.

### Basic Information

**Clonality** Polyclonal

### Immunogen Information

**Immunogen** Synthesized peptide derived from human HPLN3 AA range: 87-137

**Specificity** This antibody detects endogenous levels of HPLN3 at Human/Mouse

### Target Information

**Gene name** HAPLN3 EXLD1 UNQ238/PRO271

**Protein Name** HPLN3

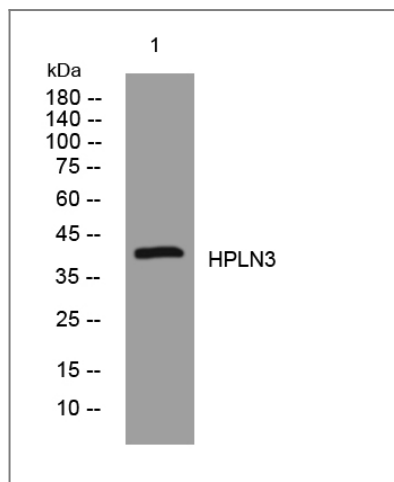
Organism	Gene ID	UniProt ID
Human	<a href="#">145864</a> ;	<a href="#">Q96S86</a> ;
Mouse	<a href="#">67666</a> ;	<a href="#">Q80WM5</a> ;

**Cellular Localization** Secreted, extracellular space, extracellular matrix .

**Tissue specificity** Widely expressed with highest levels in spleen and placenta.

**Function** Function:May function in hyaluronic acid binding.,similarity:Belongs to the HAPLN family.,similarity:Contains 1 Ig-like V-type (immunoglobulin-like) domain.,similarity:Contains 2 Link domains.,tissue specificity:Widely expressed with highest levels in spleen and placenta.,

## Validation Data



Western blot analysis of lysates from 293T cells, primary antibody was diluted at 1:1000, 4° over night

## Contact information

Orders: [order@immunoway.com](mailto:order@immunoway.com)  
Support: [tech@immunoway.com](mailto:tech@immunoway.com)  
Telephone: 877-594-3616 (Toll Free), 408-747-0185  
Website: <http://www.immunoway.com>  
Address: 2200 Ringwood Ave San Jose, CA 95131 USA



Please scan the QR code to access additional product information:  
**HPLN3 Rabbit pAb**