

DEGS2 Rabbit pAb

CatalogNo: YT6346

Key Features

Host Species

- Rabbit

Reactivity

- Human, Mouse, Rat

Applications

- WB

MW

- 36kD (Calculated)

Isotype

- IgG

Recommended Dilution Ratios

WB 1:500-2000

Storage

Storage* -15°C to -25°C/1 year (Do not lower than -25°C)

Formulation Liquid in PBS containing 50% glycerol, 0.5% BSA and 0.02% sodium azide.

Basic Information

Clonality Polyclonal

Immunogen Information

Immunogen Synthesized peptide derived from human DEGS2 AA range: 92-142

Specificity This antibody detects endogenous levels of DEGS2 at Human/Mouse/Rat

Target Information

Gene name DEGS2 C14orf66

Protein Name DEGS2

Organism	Gene ID	UniProt ID
Human	123099 ;	Q6QHC5 ;
Mouse	70059 ;	Q8R2F2 ;
Rat	314438 ;	Q564G3 ;

Cellular Localization

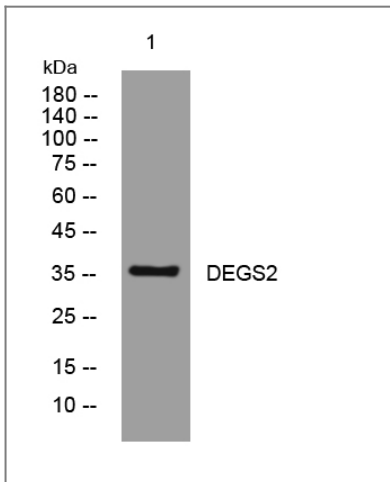
Endoplasmic reticulum membrane ; Multi-pass membrane protein .

Tissue specificity Highly expressed in skin, intestine and kidney.

Function

Function:Bifunctional enzyme which acts as both a sphingolipid delta(4)-desaturase and a sphingolipid C4-hydroxylase.,induction:Up-regulated during keratinocyte differentiation. Not expressed at day 0 or day 3 after differentiation, detected on day 6 and increases by day 9.,pathway:Membrane lipid metabolism; sphingolipid biosynthesis.,similarity:Belongs to the fatty acid desaturase family. DEGS subfamily.,tissue specificity:Highly expressed in skin, intestine and kidney.,

Validation Data



Western blot analysis of lysates from MCF-7 cells, primary antibody was diluted at 1:1000, 4° over night

Contact information

Orders: order@immunoway.com
Support: tech@immunoway.com
Telephone: 877-594-3616 (Toll Free), 408-747-0185
Website: <http://www.immunoway.com>
Address: 2200 Ringwood Ave San Jose, CA 95131 USA



Please scan the QR code to access additional product information:
DEGS2 Rabbit pAb

