

FBX46 Rabbit pAb

CatalogNo: YT6334

Key Features

Host Species

- Rabbit

Reactivity

- Human, Mouse, Rat

Applications

- WB

MW

- 66kD (Calculated)

Isotype

- IgG

Recommended Dilution Ratios

WB 1:500-2000

Storage

Storage* -15°C to -25°C/1 year (Do not lower than -25°C)

Formulation Liquid in PBS containing 50% glycerol, 0.5% BSA and 0.02% sodium azide.

Basic Information

Clonality Polyclonal

Immunogen Information

Immunogen Synthesized peptide derived from human FBX46 AA range: 67-117

Specificity This antibody detects endogenous levels of FBX46 at Human/Mouse/Rat

Target Information

Gene name FBXO46 FBX46 FBXO34L

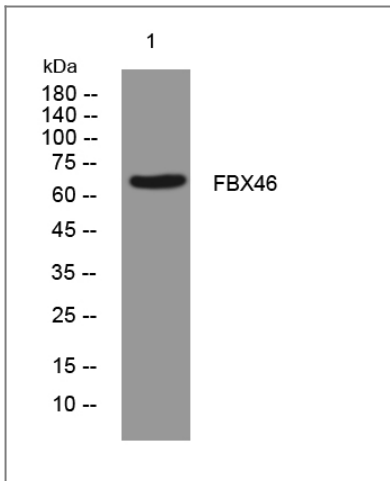
Protein Name FBX46

Organism	Gene ID	UniProt ID
Human	23403 ;	Q6PJ61 ;
Mouse	243867 ;	Q8BG80 ;
Rat	292686 ;	Q4KLY2 ;

Function

Caution:The region from 1 to 163 was deduced from the genomic sequence and ESTs by similarity to the mouse sequence.,Function:Substrate-recognition component of the SCF (SKP1-CUL1-F-box protein)-type E3 ubiquitin ligase complex.,similarity:Contains 1 F-box domain.,subunit:Interacts with SKP1A and CUL1.,

Validation Data



Western blot analysis of lysates from 293T cells, primary antibody was diluted at 1:1000, 4°over night

Contact information

Orders: order@immunoway.com
Support: tech@immunoway.com
Telephone: 877-594-3616 (Toll Free), 408-747-0185
Website: <http://www.immunoway.com>
Address: 2200 Ringwood Ave San Jose, CA 95131 USA



Please scan the QR code to access additional product information:
FBX46 Rabbit pAb