

# 1A32 Rabbit pAb

CatalogNo: YT6307

## Key Features

### Host Species

- Rabbit

### Reactivity

- Human, Rat, Mouse,

### Applications

- WB

### MW

- 40kD (Calculated)

### Isotype

- IgG

## Recommended Dilution Ratios

WB 1:500-2000

## Storage

**Storage\*** -15°C to -25°C/1 year(Do not lower than -25°C)

**Formulation** Liquid in PBS containing 50% glycerol, 0.5% BSA and 0.02% sodium azide.

## Basic Information

**Clonality** Polyclonal

## Immunogen Information

**Immunogen** Synthesized peptide derived from human 1A32 AA range: 81-131

**Specificity** This antibody detects endogenous levels of 1A32 at Human

## Target Information

**Gene name** HLA-A HLAA

**Protein Name** 1A32

**Organism**

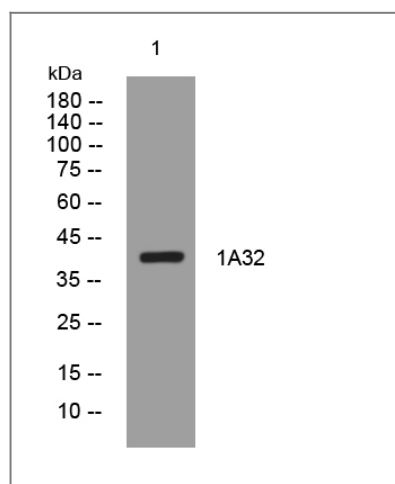
**Gene ID**

**UniProt ID**

Human

[P10314;](#)

## Validation Data



Western blot analysis of lysates from U2OS cells, primary antibody was diluted at 1:1000, 4° over night

## Contact information

Orders: [order@immunoway.com](mailto:order@immunoway.com)  
Support: [tech@immunoway.com](mailto:tech@immunoway.com)  
Telephone: 877-594-3616 (Toll Free), 408-747-0185  
Website: <http://www.immunoway.com>  
Address: 2200 Ringwood Ave San Jose, CA 95131 USA



Please scan the QR code to access additional product information:  
**1A32 Rabbit pAb**

For Research Use Only. Not for Use in Diagnostic Procedures.

[Antibody](#) | [ELISA Kits](#) | [Protein](#) | [Reagents](#)