

## V1RL3 Rabbit pAb

CatalogNo: YT4848

### Key Features

#### Host Species

- Rabbit

#### Reactivity

- Human

#### Applications

- WB,IF,ELISA

#### MW

- 35kD (Observed)

#### Isotype

- IgG

### Recommended Dilution Ratios

**WB 1:500-1:2000**

**IF 1:200-1:1000**

**ELISA 1:5000**

**Not yet tested in other applications.**

### Storage

**Storage\*** -15°C to -25°C/1 year(Do not lower than -25°C)

**Formulation** Liquid in PBS containing 50% glycerol, 0.5% BSA and 0.02% sodium azide.

### Basic Information

**Clonality** Polyclonal

### Immunogen Information

**Immunogen** The antiserum was produced against synthesized peptide derived from human VN1R3. AA range:129-178

**Specificity** V1RL3 Polyclonal Antibody detects endogenous levels of V1RL3 protein.

### Target Information

**Gene name** VN1R3

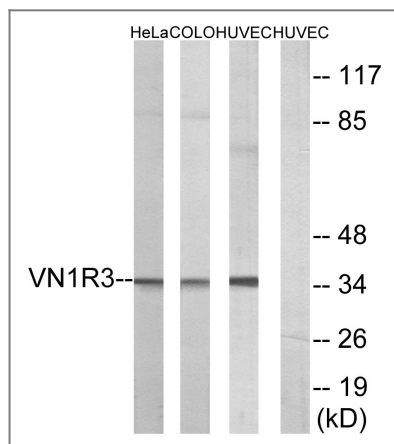
**Protein Name** Vomeronasal type-1 receptor 3

Organism	Gene ID	UniProt ID
Human	<a href="#">317702</a> ;	<a href="#">Q9BXE9</a> ;

**Cellular Localization** Cell membrane; Multi-pass membrane protein.

**Function** Function:Putative pheromone receptor.,miscellaneous:The gorilla and orangutan orthologous proteins do not exist, their genes are pseudogenes.,online information:No one nose - Issue 61 of August 2005,polymorphism:There seems to be a deletion in the gene coding for this protein in about 98% of the population.,similarity:Belongs to the G-protein coupled receptor 1 family.,

## Validation Data



Western blot analysis of lysates from HUVEC, HeLa, and COLO cells, using VN1R3 Antibody. The lane on the right is blocked with the synthesized peptide.

## Contact information

Orders: [order@immunoway.com](mailto:order@immunoway.com)  
Support: [tech@immunoway.com](mailto:tech@immunoway.com)  
Telephone: 877-594-3616 (Toll Free), 408-747-0185  
Website: <http://www.immunoway.com>  
Address: 2200 Ringwood Ave San Jose, CA 95131 USA



Please scan the QR code to access additional product information:  
**V1RL3 Rabbit pAb**