

TANK Rabbit pAb

CatalogNo: YT4540

Key Features

Host Species

- Rabbit

Reactivity

- Human, Mouse, Rat

Applications

- WB, IHC, IF, ELISA

MW

- 48kD (Observed)

Isotype

- IgG

Recommended Dilution Ratios

WB 1:500-1:2000

IHC 1:100-1:300

IF 1:200-1:1000

ELISA 1:10000

Not yet tested in other applications.

Storage

Storage* -15°C to -25°C/1 year (Do not lower than -25°C)

Formulation Liquid in PBS containing 50% glycerol, 0.5% BSA and 0.02% sodium azide.

Basic Information

Clonality Polyclonal

Immunogen Information

Immunogen The antiserum was produced against synthesized peptide derived from human TANK. AA range: 171-220

Specificity TANK Polyclonal Antibody detects endogenous levels of TANK protein.

Target Information

Gene name TANK

Protein Name TRAF family member-associated NF-kappa-B activator

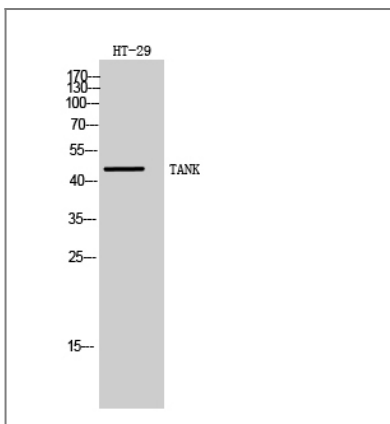
Organism	Gene ID	UniProt ID
Human	10010 ;	Q92844 ;
Mouse	21353 ;	P70347 ;

Cellular Localization Cytoplasm.

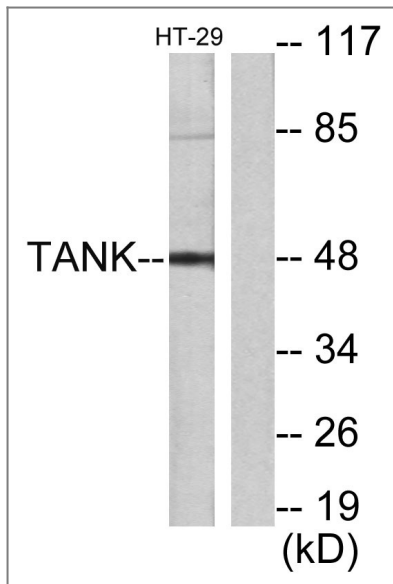
Tissue specificity Ubiquitous.

Function Function:Acts as a regulator of TRAF function by maintaining them in a latent state. Overexpression inhibits TRAF2-mediated NF-kappa-B activation signaled by CD40, TNFR1 and TNFR2. Blocks TRAF2 binding to LMP1 and inhibits LMP1-mediated NF-kappa-B activation. May be involved in I-kappa-B-kinase (IKK) regulation; may function as an adapter for kinases such as TBK1 or IKBKE that can modulate IKK activity.,PTM:Phosphorylated by IKBKE.,similarity:Contains 1 C2H2-type zinc finger.,subunit:Interacts with TBK1 (via TRAF-C domain). Interacts with TRAF1 (via TRAF-C domain). Interacts with TRAF2 (via TRAF-C domain); the interaction is disrupted by the phosphorylation of TANK by IKBKE. Interacts with TRAF3 (via TRAF-C domain); the interaction with TRAF3 is weaker than the interactions with TRAF1 and TRAF3. Interacts with IKBKG; the interaction is enhanced by IKBKE and TBK1. Part of a ternary complex consisting of TANK, IKBKB and IKBKG.,tissue specificity:Ubiquitous.,

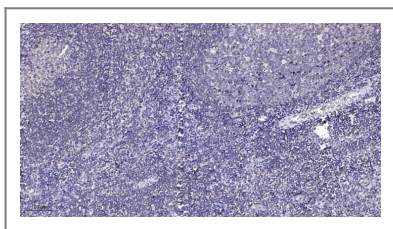
Validation Data



Western Blot analysis of HT-29 cells using TANK Polyclonal Antibody



Western blot analysis of lysates from HT29 cells, using I-TRAF Antibody. The lane on the right is blocked with the synthesized peptide.



Immunohistochemical analysis of paraffin-embedded human tonsil. 1, Antibody was diluted at 1:200(4° overnight). 2, Tris-EDTA,pH9.0 was used for antigen retrieval. 3,Secondary antibody was diluted at 1:200(room temperature, 30min).

Contact information

Orders: order@immunoway.com
 Support: tech@immunoway.com
 Telephone: 877-594-3616 (Toll Free), 408-747-0185
 Website: <http://www.immunoway.com>
 Address: 2200 Ringwood Ave San Jose, CA 95131 USA



Please scan the QR code to access additional product information:
TANK Rabbit pAb

For Research Use Only. Not for Use in Diagnostic Procedures.

[Antibody](#) | [ELISA Kits](#) | [Protein](#) | [Reagents](#)