

## Strad Rabbit pAb

CatalogNo: YT4464

### Key Features

#### Host Species

- Rabbit

#### Reactivity

- Human, Mouse

#### Applications

- WB, IHC, IF, ELISA

#### MW

- 46kD (Observed)

#### Isotype

- IgG

### Recommended Dilution Ratios

**WB 1:500-1:2000**

**IHC 1:100-1:300**

**ELISA 1:10000**

**IF 1:50-200**

### Storage

#### Storage\*

-15°C to -25°C/1 year (Do not lower than -25°C)

#### Formulation

Liquid in PBS containing 50% glycerol, 0.5% BSA and 0.02% sodium azide.

### Basic Information

#### Clonality

Polyclonal

### Immunogen Information

#### Immunogen

The antiserum was produced against synthesized peptide derived from human STRAD. AA range: 11-60

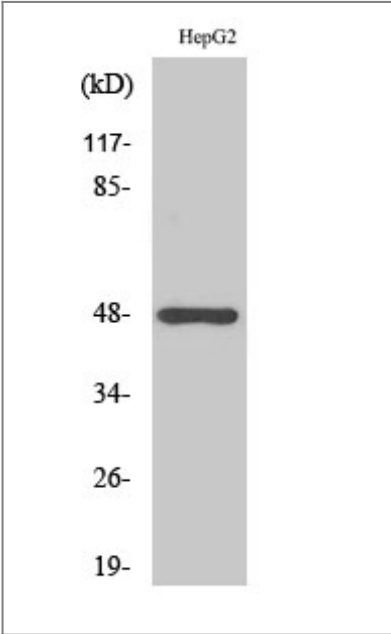
#### Specificity

Strad Polyclonal Antibody detects endogenous levels of Strad protein.

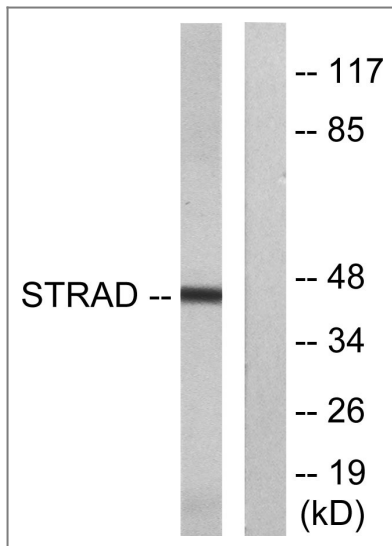
### Target Information

Gene name	STRADA		
Protein Name	STE20-related kinase adapter protein alpha		
	Organism	Gene ID	UniProt ID
	Human	<a href="#">92335;</a>	<a href="#">Q7RTN6;</a>
	Mouse	<a href="#">72149;</a>	<a href="#">Q3UUJ4;</a>
Cellular Localization	Nucleus . Cytoplasm .		
Tissue specificity	Lymph node,Mammary tumor,Synovial membrane tissue,Teratocarcinoma,U		
Function	Disease:Deletions involving STRADA are the cause of polyhydramnios, megalencephaly, and symptomatic epilepsy syndrome (PMSE) [MIM:611087]. Affected children have large heads, infantile-onset intractable multifocal seizures and severe psychomotor retardation. Neuropathological studies reveal megalencephaly, ventriculomegaly, cytomegaly and extensive vacuolization and astrogcytosis of white matter.,Domain:The protein kinase domain is predicted to be catalytically inactive.,Function:Pseudokinase which, in complex with CAB39, binds to and activates STK11. Relocates STK11 from the nucleus to the cytoplasm. Plays an essential role in STK11-mediated G1 cell cycle arrest.,similarity:Belongs to the protein kinase superfamily. STE Ser/Thr protein kinase family. STE20 subfamily.,similarity:Contains 1 protein kinase domain.,		

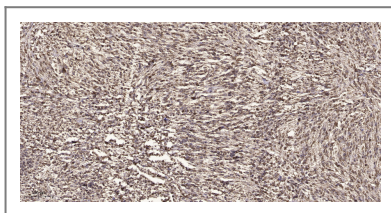
Validation Data



Western Blot analysis of various cells using Strad Polyclonal Antibody



Western blot analysis of lysates from HepG2 cells, using STRAD Antibody. The lane on the right is blocked with the synthesized peptide.



Immunohistochemical analysis of paraffin-embedded human small intestinal carcinoma tissue. 1,primary Antibody was diluted at 1:200(4° overnight). 2, Sodium citrate pH 6.0 was used for antigen retrieval(>98°C,20min). 3,Secondary antibody was diluted at 1:200

## Contact information

Orders: [order@immunoway.com](mailto:order@immunoway.com)  
 Support: [tech@immunoway.com](mailto:tech@immunoway.com)  
 Telephone: 877-594-3616 (Toll Free), 408-747-0185  
 Website: <http://www.immunoway.com>  
 Address: 2200 Ringwood Ave San Jose, CA 95131 USA



Please scan the QR code to access additional product information:  
**Strad Rabbit pAb**

For Research Use Only. Not for Use in Diagnostic Procedures.

[Antibody](#) | [ELISA Kits](#) | [Protein](#) | [Reagents](#)