

Rag B Rabbit pAb

CatalogNo: YT3991

Key Features

Host Species

- Rabbit

Reactivity

- Human, Mouse, Rat

Applications

- IHC, IF, ELISA

MW

- 43kD (Calculated)

Isotype

- IgG

Recommended Dilution Ratios

IHC 1:100-1:300

ELISA 1:40000

IF 1:50-200

Storage

Storage*

-15°C to -25°C/1 year (Do not lower than -25°C)

Formulation

Liquid in PBS containing 50% glycerol, 0.5% BSA and 0.02% sodium azide.

Basic Information

Clonality

Polyclonal

Immunogen Information

Immunogen

Synthesized peptide derived from Rag B . at AA range: 50-130

Specificity

Rag B Polyclonal Antibody detects endogenous levels of Rag B protein.

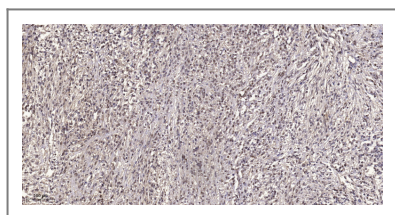
Target Information

Gene name

RRAGB

Protein Name	Ras-related GTP-binding protein B		
	Organism	Gene ID	UniProt ID
	Human	10325;	Q5VZM2;
	Mouse	245670;	Q6NTA4;
	Rat	117043;	Q63487;
Cellular Localization	Cytoplasm . Lysosome .		
Tissue specificity	Adipose tissue,Brain,Skin,		
Function	Function:Involved in the RCC1/Ran-GTPase pathway. Has guanine nucleotide-binding activity but undetectable intrinsic GTPase activity.,similarity:Belongs to the GTR/RAG GTP-binding protein family.,subunit:The short isoform binds GTP (By similarity). Interacts with RRAGC and RRAGD.,		

Validation Data



Immunohistochemical analysis of paraffin-embedded human small intestinal carcinoma tissue. 1,primary Antibody was diluted at 1:200(4° overnight). 2, Sodium citrate pH 6.0 was used for antigen retrieval(>98°C,20min). 3,Secondary antibody was diluted at 1:200

Contact information

Orders: order@immunoway.com
 Support: tech@immunoway.com
 Telephone: 877-594-3616 (Toll Free), 408-747-0185
 Website: <http://www.immunoway.com>
 Address: 2200 Ringwood Ave San Jose, CA 95131 USA



Please scan the QR code to access additional product information:
Rag B Rabbit pAb

For Research Use Only. Not for Use in Diagnostic Procedures.

[Antibody](#) | [ELISA Kits](#) | [Protein](#) | [Reagents](#)