

## Rag A/B Rabbit pAb

CatalogNo: YT3990

### Key Features

**Host Species**

- Rabbit

**Reactivity**

- Human, Mouse, Rat

**Applications**

- WB, IHC, IF, ELISA

**MW**

- 34kD (Observed)

**Isotype**

- IgG

### Recommended Dilution Ratios

**WB 1:500-1:2000****IHC 1:100-1:300****ELISA 1:20000****IF 1:50-200**

### Storage

**Storage\***

-15°C to -25°C/1 year (Do not lower than -25°C)

**Formulation**

Liquid in PBS containing 50% glycerol, 0.5% BSA and 0.02% sodium azide.

### Basic Information

**Clonality**

Polyclonal

### Immunogen Information

**Immunogen**

The antiserum was produced against synthesized peptide derived from human RRAGA/B. AA range: 264-313

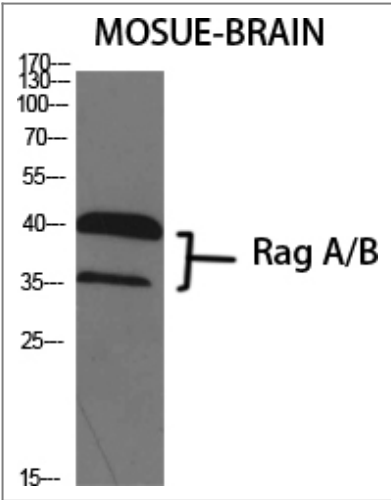
**Specificity**

Rag A/B Polyclonal Antibody detects endogenous levels of Rag A/B protein.

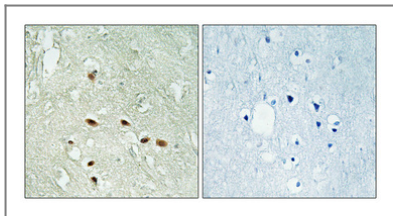
### Target Information

Gene name	RRAGA/RRAGB		
Protein Name	Ras-related GTP-binding protein A/B		
	Organism	Gene ID	UniProt ID
	Human	<a href="#">10670</a> ; <a href="#">10325</a> ;	<a href="#">Q7L523</a> ; <a href="#">Q5VZM2</a> ;
	Mouse	<a href="#">68441</a> ; <a href="#">245670</a> ;	
	Rat	<a href="#">117044</a> ; <a href="#">100909655</a> ;	<a href="#">Q63486</a> ; <a href="#">Q63487</a> ;
Cellular Localization	Cytoplasm . Nucleus . Lysosome . Predominantly cytoplasmic. May shuttle between the cytoplasm and nucleus, depending on the bound nucleotide state (PubMed:8995684, PubMed:9394008). Colocalizes in vivo with adenovirus E3-14.7K mainly to the cytoplasm especially near the nuclear membrane and in discrete foci on or near the plasma membrane (PubMed:8995684). .		
Tissue specificity	Ubiquitously expressed with highest levels of expression in skeletal muscle, heart, and brain.		
Function	Function:Involved in the RCC1/Ran-GTPase pathway. May play a direct role in a TNF-alpha signaling pathway leading to induction of cell death. May alternatively act as a cellular target for adenovirus E3-14.7K, an inhibitor of TNF-alpha functions, thereby affecting cell death. Has guanine nucleotide-binding activity but undetectable intrinsic GTPase activity.,similarity:Belongs to the GTR/RAG GTP-binding protein family.,subcellular location:Predominantly cytoplasmic. May shuttle between the cytoplasm and nucleus, depending on the bound nucleotide state. Colocalizes in vivo with adenovirus E3-14.7K mainly to the cytoplasm especially near the nuclear membrane and in discrete foci on or near the plasma membrane.,subunit:Can occur as a homodimer, or form a heterodimer with RRAGC or RRAGD in a sequence-independent manner. Binds GTP. The GTP-bound form of RRAGA interacts with NOL8. Interacts with adenovirus E3 14.7 kDa protein.,tissue specificity:Ubiquitously expressed with highest levels of expression in skeletal muscle, heart, and brain.,		

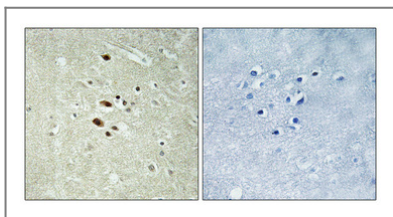
| Validation Data



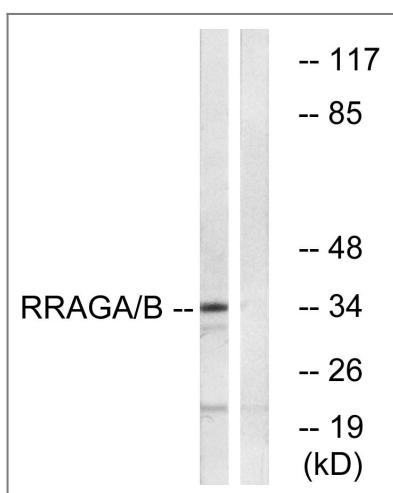
Western Blot analysis of various cells using Rag A/B Polyclonal Antibody diluted at 1:1000



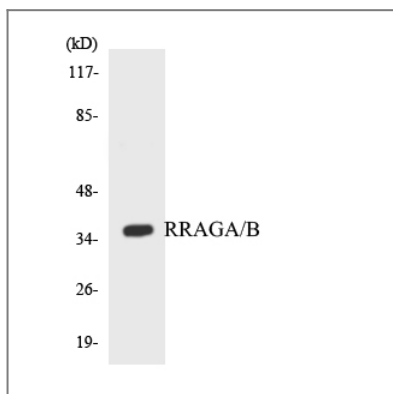
Immunohistochemical analysis of paraffin-embedded Human brain. Antibody was diluted at 1:100(4° overnight). High-pressure and temperature Tris-EDTA,pH8.0 was used for antigen retrieval. Negative contrl (right) obtaned from antibody was pre-absorbed by immunogen peptide.



Immunohistochemical analysis of paraffin-embedded Human brain. Antibody was diluted at 1:100(4° overnight). High-pressure and temperature Tris-EDTA,pH8.0 was used for antigen retrieval. Negative contrl (right) obtaned from antibody was pre-absorbed by immunogen peptide.



Western blot analysis of lysates from HepG2 cells, using RRAGA/B Antibody. The lane on the right is blocked with the synthesized peptide.



Western blot analysis of the lysates from HepG2 cells using RRAGA/B antibody.

## Contact information

Orders: order@immunoway.com  
 Support: tech@immunoway.com  
 Telephone: 877-594-3616 (Toll Free), 408-747-0185  
 Website: <http://www.immunoway.com>  
 Address: 2200 Ringwood Ave San Jose, CA 95131 USA



Please scan the QR code to access additional product information:  
**Rag A/B Rabbit pAb**

