

PLC β 2 Rabbit pAb

CatalogNo: YT3788

Key Features

Host Species

- Rabbit

Reactivity

- Human, Mouse, Rat

Applications

- WB, IHC

MW

- 150kD (Observed)

Isotype

- IgG

Recommended Dilution Ratios

WB 1:500-2000

IHC 1:50-300

Storage

Storage* -15°C to -25°C/1 year (Do not lower than -25°C)

Formulation Liquid in PBS containing 50% glycerol, 0.5% BSA and 0.02% sodium azide.

Basic Information

Clonality Polyclonal

Immunogen Information

Immunogen Synthesized peptide derived from the Internal region of human PLC β 2.

Specificity PLC β 2 Polyclonal Antibody detects endogenous levels of PLC β 2 protein.

Target Information

Gene name PLCB2

Protein Name 1-phosphatidylinositol 4,5-bisphosphate phosphodiesterase beta-2

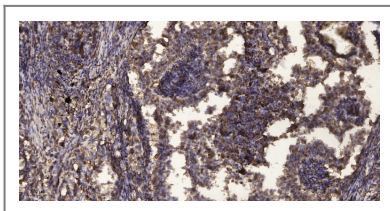
Organism	Gene ID	UniProt ID
Human	5330 ;	Q00722 ;
Mouse	18796 ;	A3KGF7 ;
Rat	85240 ;	O89040 ;

Cellular Localization intracellular,cytosol,

Tissue specificity Placenta,Spleen,Thymus,

Function Catalytic activity:1-phosphatidyl-1D-myo-inositol 4,5-bisphosphate + H(2)O = 1D-myo-inositol 1,4,5-trisphosphate + diacylglycerol.,cofactor:Binds 1 calcium ion per subunit.,Function:The production of the second messenger molecules diacylglycerol (DAG) and inositol 1,4,5-trisphosphate (IP3) is mediated by activated phosphatidylinositol-specific phospholipase C enzymes.,miscellaneous:The receptor-mediated activation of PLC-beta-2 is most effectively mediated by one G-protein alpha subunit, alpha-16.,similarity:Contains 1 C2 domain.,similarity:Contains 1 PI-PLC X-box domain.,similarity:Contains 1 PI-PLC Y-box domain.,subunit:Interacts with RAC1.,

Validation Data



Immunohistochemical analysis of paraffin-embedded human Squamous cell carcinoma of lung. 1, Antibody was diluted at 1:200(4° overnight). 2, Tris-EDTA,pH9.0 was used for antigen retrieval. 3,Secondary antibody was diluted at 1:200(room temperature, 45min).

Contact information

Orders: order@immunoway.com
Support: tech@immunoway.com
Telephone: 877-594-3616 (Toll Free), 408-747-0185
Website: <http://www.immunoway.com>
Address: 2200 Ringwood Ave San Jose, CA 95131 USA



Please scan the QR code to access additional product information:
PLC β2 Rabbit pAb