

## PKA $\gamma$ Rabbit pAb

CatalogNo: YT3751

### Key Features

**Host Species**

- Rabbit

**Reactivity**

- Human

**Applications**

- WB,IHC,IF,ELISA

**MW**

- 40kD (Observed)

**Isotype**

- IgG

### Recommended Dilution Ratios

**WB 1:500-1:2000****IHC 1:100-1:300****ELISA 1:10000****IF 1:50-200**

### Storage

**Storage\*** -15°C to -25°C/1 year(Do not lower than -25°C)**Formulation** Liquid in PBS containing 50% glycerol, 0.5% BSA and 0.02% sodium azide.

### Basic Information

**Clonality** Polyclonal

### Immunogen Information

**Immunogen** The antiserum was produced against synthesized peptide derived from human KAPCG. AA range:1-50**Specificity** PKA $\gamma$  cat Polyclonal Antibody detects endogenous levels of PKA $\gamma$  cat protein.

### Target Information

**Gene name** PRKACG

**Protein Name** cAMP-dependent protein kinase catalytic subunit gamma

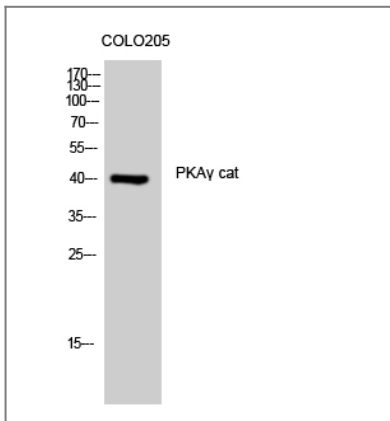
Organism	Gene ID	UniProt ID
Human	<a href="#">5568</a> ;	<a href="#">P22612</a> ;

**Cellular Localization** nucleoplasm,cytosol,ciliary base,

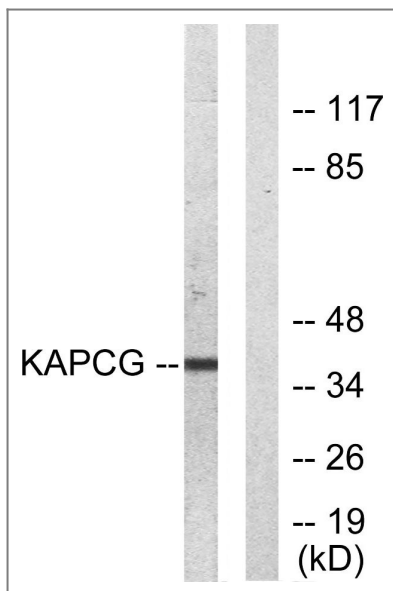
**Tissue specificity** Testis specific. But important tissues such as brain and ovary have not been analyzed for the content of transcript.

**Function** Catalytic activity:ATP + a protein = ADP + a phosphoprotein.,enzyme regulation:Activated by cAMP.,Function:Phosphorylates a large number of substrates in the cytoplasm and the nucleus.,similarity:Belongs to the protein kinase superfamily. AGC Ser/Thr protein kinase family. cAMP subfamily.,similarity:Contains 1 AGC-kinase C-terminal domain.,similarity:Contains 1 protein kinase domain.,subunit:A number of inactive tetrameric holoenzymes are produced by the combination of homo- or heterodimers of the different regulatory subunits associated with two catalytic subunits. cAMP causes the dissociation of the inactive holoenzyme into a dimer of regulatory subunits bound to four cAMP and two free monomeric catalytic subunits.,tissue specificity:Testis specific. But important tissues such as brain and ovary have not been analyzed for the content of transcript.,

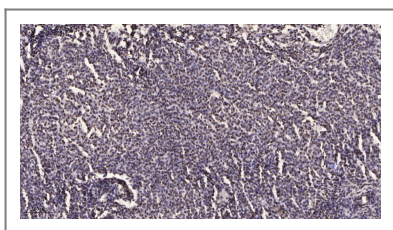
## Validation Data



Western Blot analysis of COLO205 cells using PKAγ cat Polyclonal Antibody



Western blot analysis of lysates from COLO205 cells, using KAPCG Antibody. The lane on the right is blocked with the synthesized peptide.



Immunohistochemical analysis of paraffin-embedded human brain tumor. 1, Antibody was diluted at 1:200(4° overnight). 2, Tris-EDTA,pH9.0 was used for antigen retrieval. 3,Secondary antibody was diluted at 1:200(room temperature, 45min).

## Contact information

Orders: [order@immunoway.com](mailto:order@immunoway.com)  
Support: [tech@immunoway.com](mailto:tech@immunoway.com)  
Telephone: 877-594-3616 (Toll Free), 408-747-0185  
Website: <http://www.immunoway.com>  
Address: 2200 Ringwood Ave San Jose, CA 95131 USA



Please scan the QR code to access additional product information:  
**PKA $\gamma$  Rabbit pAb**

For Research Use Only. Not for Use in Diagnostic Procedures.

[Antibody](#) | [ELISA Kits](#) | [Protein](#) | [Reagents](#)