

## PDGF-B Rabbit pAb

CatalogNo: YT3631 Orthogonal Validated 

### Key Features

#### Host Species

- Rabbit

#### Reactivity

- Human, Mouse, Rat

#### Applications

- IF, WB, IHC, ELISA

#### MW

- 27kD (Observed)

#### Isotype

- IgG

### Recommended Dilution Ratios

**IF 1:50-200****WB 1:500-1:2000****IHC 1:100-1:300****ELISA 1:10000****Not yet tested in other applications**

### Storage

**Storage\*** -15°C to -25°C/1 year (Do not lower than -25°C)**Formulation** Liquid in PBS containing 50% glycerol, 0.5% BSA and 0.02% sodium azide.

### Basic Information

**Clonality** Polyclonal

### Immunogen Information

**Immunogen** The antiserum was produced against synthesized peptide derived from human PDGFB. AA range:16-65**Specificity** PDGF-B Polyclonal Antibody detects endogenous levels of PDGF-B protein.

## Target Information

**Gene name** PDGFB

**Protein Name** Platelet-derived growth factor subunit B

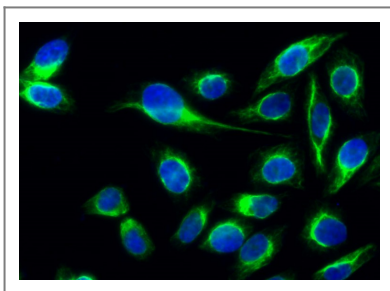
Organism	Gene ID	UniProt ID
Human	<a href="#">5155</a> ;	<a href="#">P01127</a> ;
Mouse	<a href="#">18591</a> ;	<a href="#">P31240</a> ;
Rat	<a href="#">24628</a> ;	<a href="#">Q05028</a> ;

**Cellular Localization** Secreted. Released by platelets upon wounding.

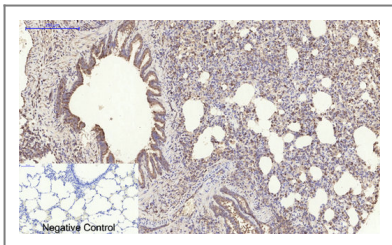
**Tissue specificity** Expressed at high levels in the heart, brain (sustantia nigra), placenta and fetal kidney. Expressed at moderate levels in the brain (hippocampus), skeletal muscle, kidney and lung.

**Function** Disease:A chromosomal aberration involving PDGFB is a cause of dermatofibrosarcoma protuberans (DFSP) [MIM:607907]. Translocation t(17;22)(q22;q13) with COLA1. DFSP is an uncommon, locally aggressive, but rarely metastasizing tumor of the deep dermis and subcutaneous tissue. It typically occurs during early or middle adult life and is most frequently located on the trunk and proximal extremities.,Function:Platelet-derived growth factor is a potent mitogen for cells of mesenchymal origin. Binding of this growth factor to its affinity receptor elicits a variety of cellular responses. It is released by platelets upon wounding and plays an important role in stimulating adjacent cells to grow and thereby heals the wound.,miscellaneous:A-A and B-B, as well as A-B, dimers can bind to the PDGF receptor.,online information:Clinical information on Regranex,pharmaceutical:Available under the name Regranex (Ortho-McNeil). Used to promote healing in diabetic neuropathic foot ulcers.,similarity:Belongs to the PDGF/VEGF growth factor family.,subunit:Antiparallel disulfide-linked dimer of non-identical (A and B) chains. Homodimers of A and B chains are implicated in transformation processes. Interacts with XLKD1.,tissue specificity:Expressed at high levels in the heart, brain (sustantia nigra), placenta and fetal kidney. Expressed at moderate levels in the brain (hippocampus), skeletal muscle, kidney and lung.,

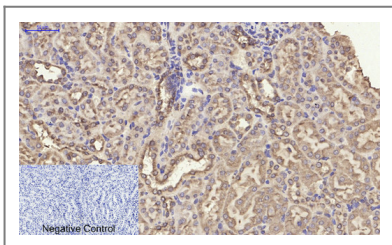
## Validation Data



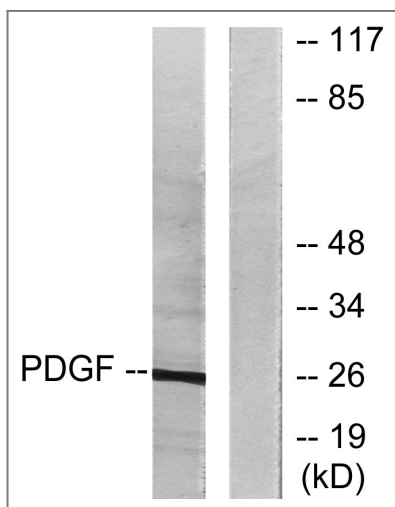
Immunofluorescence analysis of HeLa cell. 1,PDGF-B Polyclonal Antibody(green) was diluted at 1:200(4° overnight). 2, Goat Anti Rabbit Alexa Fluor 488 Catalog:RS3211 was diluted at 1:1000(room temperature, 50min). 3 DAPI(blue) 10min.



Immunohistochemical analysis of paraffin-embedded Rat-lung tissue. 1,PDGF-B Polyclonal Antibody was diluted at 1:200(4°C,overnight). 2, Sodium citrate pH 6.0 was used for antibody retrieval(>98°C,20min). 3,Secondary antibody was diluted at 1:200(room tempeRature, 30min). Negative control was used by secondary antibody only.



Immunohistochemical analysis of paraffin-embedded Mouse-kidney tissue. 1,PDGF-B Polyclonal Antibody was diluted at 1:200(4°C,overnight). 2, Sodium citrate pH 6.0 was used for antibody retrieval(>98°C,20min). 3,Secondary antibody was diluted at 1:200(room tempeRature, 30min). Negative control was used by secondary antibody only.



Western blot analysis of lysates from NIH/3T3 cells, using PDGFB Antibody. The lane on the right is blocked with the synthesized peptide.

## Contact information

Orders: [order@immunoway.com](mailto:order@immunoway.com)  
 Support: [tech@immunoway.com](mailto:tech@immunoway.com)  
 Telephone: 877-594-3616 (Toll Free), 408-747-0185  
 Website: <http://www.immunoway.com>  
 Address: 2200 Ringwood Ave San Jose, CA 95131 USA



Please scan the QR code to access additional product information:  
**PDGF-B Rabbit pAb**

For Research Use Only. Not for Use in Diagnostic Procedures.

[Antibody](#) | [ELISA Kits](#) | [Protein](#) | [Reagents](#)