

## PDGF-A Rabbit pAb

CatalogNo: YT3630 **Orthogonal Validated** 

### Key Features

#### Host Species

- Rabbit

#### Reactivity

- Human, Mouse, Rat

#### Applications

- WB, IHC, IF, ELISA

#### MW

- 17kD (Observed)

#### Isotype

- IgG

### Recommended Dilution Ratios

**WB 1:500-1:2000****IHC 1:100-1:300****ELISA 1:40000****IF 1:50-200**

### Storage

**Storage\*** -15°C to -25°C/1 year (Do not lower than -25°C)**Formulation** Liquid in PBS containing 50% glycerol, 0.5% BSA and 0.02% sodium azide.

### Basic Information

**Clonality** Polyclonal

### Immunogen Information

**Immunogen** The antiserum was produced against synthesized peptide derived from human PDGF-A. AA range:105-154**Specificity** PDGF-A Polyclonal Antibody detects endogenous levels of PDGF-A protein.

### Target Information

**Gene name** PDGFA

**Protein Name** Platelet-derived growth factor subunit A

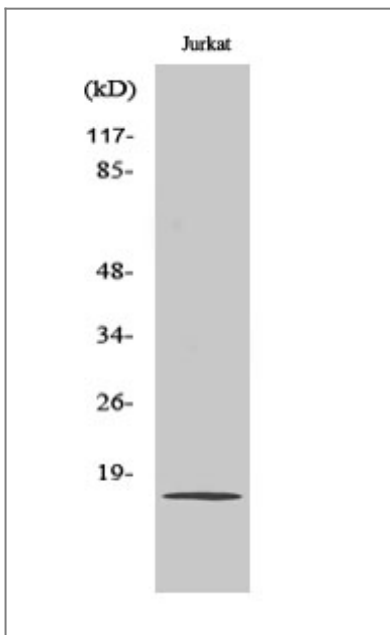
Organism	Gene ID	UniProt ID
Human	<a href="#">5154</a> ;	<a href="#">P04085</a> ;
Mouse	<a href="#">18590</a> ;	<a href="#">P20033</a> ;
Rat	<a href="#">25266</a> ;	<a href="#">P28576</a> ;

**Cellular Localization** Secreted. Released by platelets upon wounding.

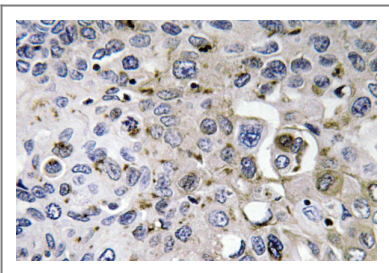
**Tissue specificity** PCR rescued clones,

**Function** Domain:The long form contains a basic insert which acts as a cell retention signal.,Function:Platelet-derived growth factor is a potent mitogen for cells of mesenchymal origin. Binding of this growth factor to its affinity receptor elicits a variety of cellular responses. It is released by platelets upon wounding and plays an important role in stimulating adjacent cells to grow and thereby heals the wound.,miscellaneous:A-A and B-B, as well as A-B, dimers can bind to the PDGF receptor.,similarity:Belongs to the PDGF/VEGF growth factor family.,subunit:Antiparallel disulfide-linked dimer of non-identical (A and B) chains. Homodimers of A and B chains are implicated in transformation processes. Interacts with CSPG4.,

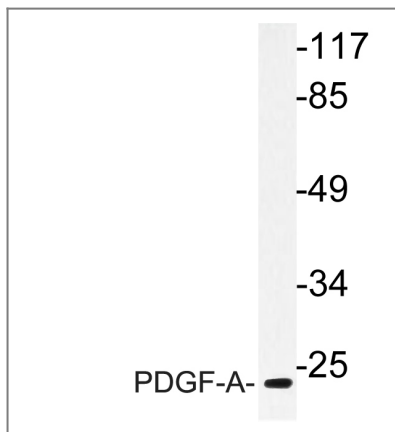
## Validation Data



Western Blot analysis of various cells using PDGF-A Polyclonal Antibody



Immunohistochemistry analysis of PDGF-A antibody in paraffin-embedded human lung carcinoma tissue.



Western blot analysis of lysate from Jurkat cells, using PDGF-A antibody.

## Contact information

Orders: [order@immunoway.com](mailto:order@immunoway.com)  
Support: [tech@immunoway.com](mailto:tech@immunoway.com)  
Telephone: 877-594-3616 (Toll Free), 408-747-0185  
Website: <http://www.immunoway.com>  
Address: 2200 Ringwood Ave San Jose, CA 95131 USA



Please scan the QR code to access additional product information:  
**PDGF-A Rabbit pAb**

For Research Use Only. Not for Use in Diagnostic Procedures.

[Antibody](#) | [ELISA Kits](#) | [Protein](#) | [Reagents](#)