

## Olfactory receptor 8B2/3 Rabbit pAb

CatalogNo: YT3439

### Key Features

#### Host Species

- Rabbit

#### Reactivity

- Human

#### Applications

- WB,IF,ELISA

#### MW

- 35kD (Observed)

#### Isotype

- IgG

### Recommended Dilution Ratios

**WB 1:500-1:2000**

**IF 1:200-1:1000**

**ELISA 1:10000**

**Not yet tested in other applications.**

### Storage

#### Storage\*

-15°C to -25°C/1 year(Do not lower than -25°C)

#### Formulation

Liquid in PBS containing 50% glycerol, 0.5% BSA and 0.02% sodium azide.

### Basic Information

#### Clonality

Polyclonal

### Immunogen Information

#### Immunogen

The antiserum was produced against synthesized peptide derived from human OR8B2/8B3. AA range:199-248

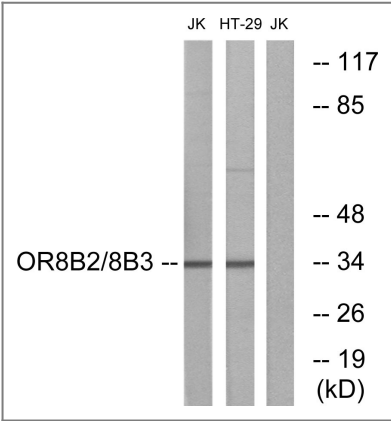
#### Specificity

Olfactory receptor 8B2/3 Polyclonal Antibody detects endogenous levels of Olfactory receptor 8B2/3 protein.

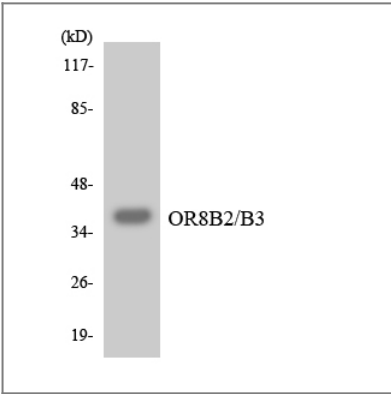
## Target Information

Gene name	OR8B2/OR8B3		
Protein Name	Olfactory receptor 8B2/3		
	Organism	Gene ID	UniProt ID
	Human	<a href="#">26595</a> ;	<a href="#">Q96RD0</a> ; <a href="#">Q8NGG8</a> ;
Cellular Localization	Cell membrane; Multi-pass membrane protein.		
Function	Function:Odorant receptor .,similarity:Belongs to the G-protein coupled receptor 1 family.,		

## Validation Data



Western blot analysis of lysates from Jurkat and HT-29 cells, using OR8B2/8B3 Antibody. The lane on the right is blocked with the synthesized peptide.



Western blot analysis of the lysates from K562 cells using OR8B2/B3 antibody.

## Contact information

Orders: order@immunoway.com  
Support: tech@immunoway.com  
Telephone: 877-594-3616 (Toll Free), 408-747-0185  
Website: <http://www.immunoway.com>  
Address: 2200 Ringwood Ave San Jose, CA 95131 USA



Please scan the QR code  
to access additional  
product information:  
**Olfactory receptor  
8B2/3 Rabbit pAb**

---

For Research Use Only. Not for Use in Diagnostic Procedures.

[Antibody](#) | [ELISA Kits](#) | [Protein](#) | [Reagents](#)