

Olfactory receptor 6A2 Rabbit pAb

CatalogNo: YT3422

Key Features

Host Species

- Rabbit

Reactivity

- Human

Applications

- WB,ELISA

MW

- 36kD (Observed)

Isotype

- IgG

Recommended Dilution Ratios

WB 1:500-1:2000

ELISA 1:20000

Not yet tested in other applications.

Storage

Storage* -15°C to -25°C/1 year(Do not lower than -25°C)

Formulation Liquid in PBS containing 50% glycerol, 0.5% BSA and 0.02% sodium azide.

Basic Information

Clonality Polyclonal

Immunogen Information

Immunogen The antiserum was produced against synthesized peptide derived from human OR6A2. AA range:58-107

Specificity Olfactory receptor 6A2 Polyclonal Antibody detects endogenous levels of Olfactory receptor 6A2 protein.

Target Information

Gene name OR6A2

Protein Name Olfactory receptor 6A2

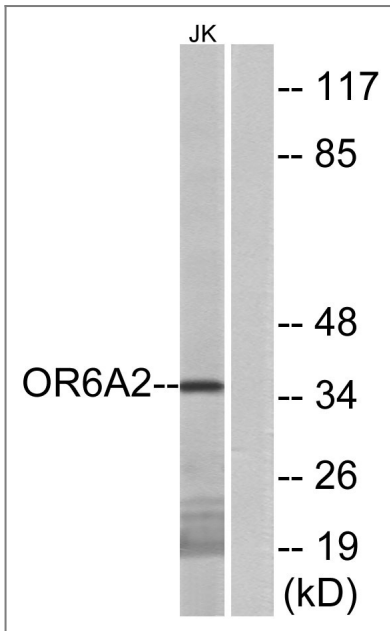
Organism	Gene ID	UniProt ID
Human	8590 ;	O95222 ; Q3MJC7 ;

Cellular Localization Cell membrane; Multi-pass membrane protein.

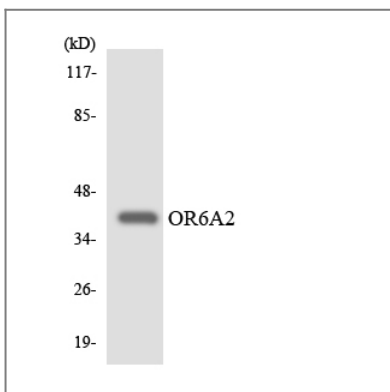
Tissue specificity Brain,

Function Function:Odorant receptor .,similarity:Belongs to the G-protein coupled receptor 1 family.,

Validation Data



Western blot analysis of lysates from Jurkat cells, using OR6A2 Antibody. The lane on the right is blocked with the synthesized peptide.



Western blot analysis of the lysates from HeLa cells using OR6A2 antibody.

Contact information

Orders: order@immunoway.com
Support: tech@immunoway.com
Telephone: 877-594-3616 (Toll Free), 408-747-0185
Website: http://www.immunoway.com
Address: 2200 Ringwood Ave San Jose, CA 95131 USA



Please scan the QR code
to access additional
product information:
**Olfactory receptor
6A2 Rabbit pAb**

For Research Use Only. Not for Use in Diagnostic Procedures.

[Antibody](#) | [ELISA Kits](#) | [Protein](#) | [Reagents](#)