

Olfactory receptor 56A3 Rabbit pAb

CatalogNo: YT3388

Key Features

Host Species

- Rabbit

Reactivity

- Human

Applications

- IF,ELISA

MW

- 36kD (Calculated)

Isotype

- IgG

Recommended Dilution Ratios

IF 1:200-1:1000

ELISA 1:20000

Not yet tested in other applications

Storage

Storage* -15°C to -25°C/1 year(Do not lower than -25°C)

Formulation Liquid in PBS containing 50% glycerol, 0.5% BSA and 0.02% sodium azide.

Basic Information

Clonality Polyclonal

Immunogen Information

Immunogen The antiserum was produced against synthesized peptide derived from human OR56A3. AA range:266-315

Specificity Olfactory receptor 56A3 Polyclonal Antibody detects endogenous levels of Olfactory receptor 56A3 protein.

Target Information

Gene name OR56A3

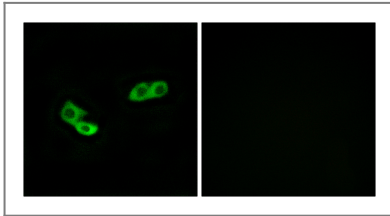
Protein Name Olfactory receptor 56A3

Organism	Gene ID	UniProt ID
Human	390083 ;	Q8NH54 ;

Cellular Localization Cell membrane; Multi-pass membrane protein.

Function Function:Odorant receptor .,similarity:Belongs to the G-protein coupled receptor 1 family.,

Validation Data



Immunofluorescence analysis of LOVO cells, using OR56A3 Antibody. The picture on the right is blocked with the synthesized peptide.

Contact information

Orders: order@immunoway.com
Support: tech@immunoway.com
Telephone: 877-594-3616 (Toll Free), 408-747-0185
Website: <http://www.immunoway.com>
Address: 2200 Ringwood Ave San Jose, CA 95131 USA



Please scan the QR code to access additional product information:
Olfactory receptor 56A3 Rabbit pAb

For Research Use Only. Not for Use in Diagnostic Procedures.

[Antibody](#) | [ELISA Kits](#) | [Protein](#) | [Reagents](#)