

NMDAε4 Rabbit pAb

CatalogNo: YT3155

| Key Features

Host Species

- Rabbit

Reactivity

- Human, Mouse, Rat, Monkey

Applications

- WB, ELISA

MW

- 170kD (Observed)

Isotype

- IgG

| Recommended Dilution Ratios

WB 1:500-1:2000

ELISA 1:40000

Not yet tested in other applications.

| Storage

Storage*

-15°C to -25°C/1 year(Do not lower than -25°C)

Formulation

Liquid in PBS containing 50% glycerol, 0.5% BSA and 0.02% sodium azide.

| Basic Information

Clonality

Polyclonal

| Immunogen Information

Immunogen

The antiserum was produced against synthesized peptide derived from human GRIN2D. AA range:671-720

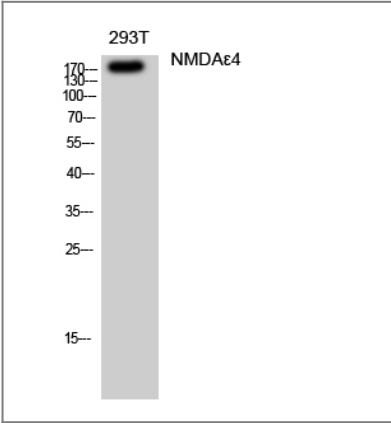
Specificity

NMDAε4 Polyclonal Antibody detects endogenous levels of NMDAε4 protein.

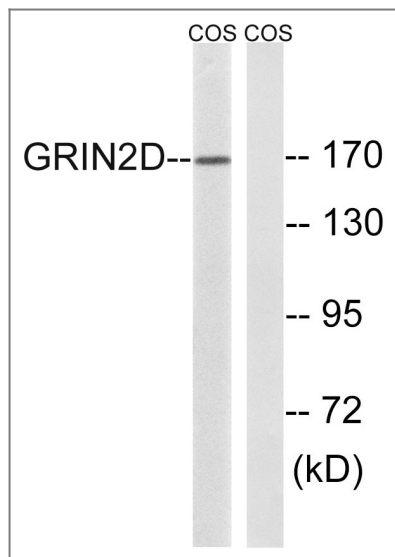
| Target Information

Gene name	GRIN2D		
Protein Name	Glutamate [NMDA] receptor subunit epsilon-4		
	Organism	Gene ID	UniProt ID
	Human	2906 ;	O15399 ;
	Mouse	14814 ;	Q03391 ;
	Rat	24412 ;	Q62645 ;
Cellular Localization	Cell membrane ; Multi-pass membrane protein. Cell junction, synapse, postsynaptic cell membrane; Multi-pass membrane protein.		
Tissue specificity	Brain,Fetal brain,		
Function	Function:NMDA receptor subtype of glutamate-gated ion channels with high calcium permeability and voltage-dependent sensitivity to magnesium. Mediated by glycine.,similarity:Belongs to the glutamate-gated ion channel (TC 1.A.10) family.,subunit:Interacts with PDZ domains of INADL and DLG4 (By similarity). Forms heteromeric channel of a zeta subunit (GRIN1), a epsilon subunit (GRIN2A, GRIN2B, GRIN2C or GRIN2D) and a third subunit (GRIN3A or GRIN3B).,		

| Validation Data



Western Blot analysis of 293T cells using NMDAε4 Polyclonal Antibody diluted at 1:500



Western blot analysis of lysates from COS7 cells, using GRIN2D Antibody. The lane on the right is blocked with the synthesized peptide.

Contact information

Orders: order@immunoway.com
Support: tech@immunoway.com
Telephone: 877-594-3616 (Toll Free), 408-747-0185
Website: <http://www.immunoway.com>
Address: 2200 Ringwood Ave San Jose, CA 95131 USA



Please scan the QR code to access additional product information:
NMDAε4 Rabbit pAb

For Research Use Only. Not for Use in Diagnostic Procedures.

[Antibody](#) | [ELISA Kits](#) | [Protein](#) | [Reagents](#)