

MEK Kinase-4 Rabbit pAb

CatalogNo: YT2709

Key Features

Host Species

- Rabbit

Reactivity

- Human, Mouse

Applications

- IHC, IF, ELISA

MW

- 182kD (Calculated)

Isotype

- IgG

Recommended Dilution Ratios

IHC 1:100-1:300

ELISA 1:5000

IF 1:50-200

Storage

Storage* -15°C to -25°C/1 year (Do not lower than -25°C)

Formulation Liquid in PBS containing 50% glycerol, 0.5% BSA and 0.02% sodium azide.

Basic Information

Clonality Polyclonal

Immunogen Information

Immunogen The antiserum was produced against synthesized peptide derived from human MAP3K4. AA range:1281-1330

Specificity MEK Kinase-4 Polyclonal Antibody detects endogenous levels of MEK Kinase-4 protein.

Target Information

Gene name MAP3K4

Protein Name Mitogen-activated protein kinase kinase kinase 4

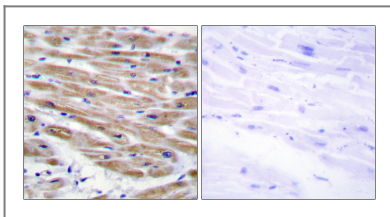
| Organism | Gene ID | UniProt ID |
|----------|------------------------|-------------------------|
| Human | 4216; | Q9Y6R4; |
| Mouse | 26407; | O08648; |

Cellular Localization Cytoplasm, perinuclear region . Localized in perinuclear vesicular-like structures, probably Golgi-associated vesicles. .

Tissue specificity Expressed at high levels in heart, placenta, skeletal muscle and pancreas, and at lower levels in other tissues.

Function Catalytic activity:ATP + a protein = ADP + a phosphoprotein.,cofactor:Magnesium.,enzyme regulation:N-terminal autoinhibitory domain interacts with the C-terminal kinase domain, inhibiting kinase activity, and preventing interaction with its substrate, MAP2K6. The GADD45 proteins activate the kinase by binding to the N-terminal domain. Activated by phosphorylation on Thr-1504.,Function:Component of a protein kinase signal transduction cascade. Activates the CSBP2, P38 and JNK MAPK pathways, but not the ERK pathway. Specifically phosphorylates and activates MAP2K4 and MAP2K6.,similarity:Belongs to the protein kinase superfamily.,similarity:Belongs to the protein kinase superfamily. STE Ser/Thr protein kinase family. MAP kinase kinase kinase subfamily.,similarity:Contains 1 protein kinase domain.,subunit:Binds both upstream activators and downstream substrates in multimolecular complexes. Interacts with AXIN1 and DIXDC1; interaction with DIXDC1 prevents interaction with AXIN1.,tissue specificity:Expressed at high levels in heart, placenta, skeletal muscle and pancreas, and at lower levels in other tissues.,

Validation Data



Immunohistochemistry analysis of paraffin-embedded human heart tissue, using MAP3K4 Antibody. The picture on the right is blocked with the synthesized peptide.

Contact information

Orders: order@immunoway.com
Support: tech@immunoway.com
Telephone: 877-594-3616 (Toll Free), 408-747-0185
Website: <http://www.immunoway.com>
Address: 2200 Ringwood Ave San Jose, CA 95131 USA



Please scan the QR code to access additional product information:
MEK Kinase-4
Rabbit pAb

