

# Integrin $\alpha$ V Rabbit pAb

CatalogNo: YT2365

## Key Features

### Host Species

- Rabbit

### Reactivity

- Human, Mouse

### Applications

- WB, IHC, IF, ELISA

### MW

- 135kD (Observed)

### Isotype

- IgG

## Recommended Dilution Ratios

**WB 1:500-1:2000****IHC 1:100-1:300****ELISA 1:20000****IF 1:50-200**

## Storage

**Storage\*** -15°C to -25°C/1 year (Do not lower than -25°C)**Formulation** Liquid in PBS containing 50% glycerol, 0.5% BSA and 0.02% sodium azide.

## Basic Information

**Clonality** Polyclonal

## Immunogen Information

**Immunogen** The antiserum was produced against synthesized peptide derived from human Integrin  $\alpha$ V. AA range: 755-804**Specificity** Integrin  $\alpha$ V Polyclonal Antibody detects endogenous levels of Integrin  $\alpha$ V protein.

## Target Information

**Gene name** ITGAV

**Protein Name** Integrin alpha-V

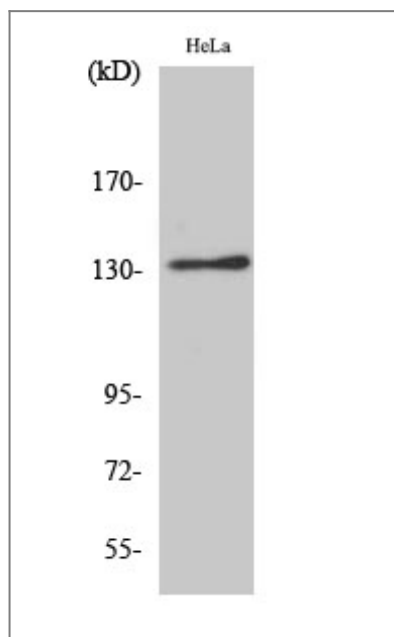
Organism	Gene ID	UniProt ID
Human	<a href="#">3685</a> ;	<a href="#">P06756</a> ;
Mouse	<a href="#">16410</a> ;	<a href="#">P43406</a> ;

**Cellular Localization** Cell membrane; Single-pass type I membrane protein. Cell junction, focal adhesion .

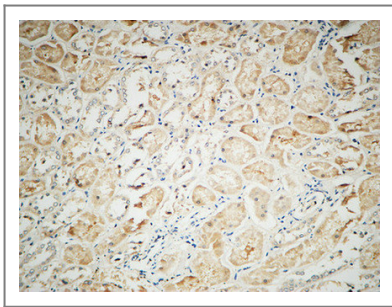
**Tissue specificity** Aortic endothelium,Liver,Pooled,Testis,

**Function** Function:The alpha-V integrins are receptors for vitronectin, cytotactin, fibronectin, fibrinogen, laminin, matrix metalloproteinase-2, osteopontin, osteomodulin, prothrombin, thrombospondin and vWF. They recognize the sequence R-G-D in a wide array of ligands. In case of HIV-1 infection, the interaction with extracellular viral Tat protein seems to enhance angiogenesis in Kaposi's sarcoma lesions.,similarity:Belongs to the integrin alpha chain family.,similarity:Contains 7 FG-GAP repeats.,subunit:Heterodimer of an alpha and a beta subunit. The alpha subunit is composed of an heavy and a light chain linked by a disulfide bond. Alpha-V associates with either beta-1, beta-3, beta-5, beta-6 or beta-8 subunit. Interacts with HIV-1 Tat. Alpha-V/beta-6 binds to foot-and-mouth disease virus (FMDV) VP1 protein and acts as a receptor for this virus (By similarity). Alpha-V/beta-6 binds to coxsackievirus A9 and coxsackievirus B1 capsid proteins and acts as a receptor for these viruses.,

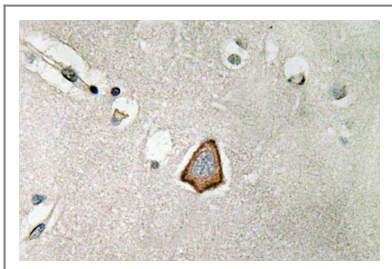
## Validation Data



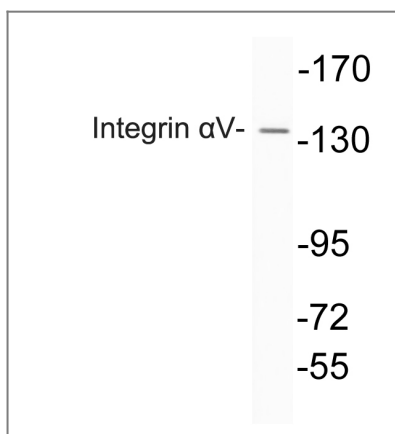
Western Blot analysis of various cells using Integrin  $\alpha$ V Polyclonal Antibody diluted at 1:1000



Immunohistochemical analysis of paraffin-embedded Human kidney. 1, Antibody was diluted at 1:100(4° overnight). 2, High-pressure and temperature EDTA, pH8.0 was used for antigen retrieval. 3,Secondary antibody was diluted at 1:200(room temperature, 30min).



Immunohistochemistry analysis of Integrin  $\alpha$ V antibody in paraffin-embedded human brain tissue.



Western blot analysis of lysate from HeLa cells, using Integrin  $\alpha$ V antibody.

## Contact information

Orders: [order@immunoway.com](mailto:order@immunoway.com)  
Support: [tech@immunoway.com](mailto:tech@immunoway.com)  
Telephone: 877-594-3616 (Toll Free), 408-747-0185  
Website: <http://www.immunoway.com>  
Address: 2200 Ringwood Ave San Jose, CA 95131 USA



Please scan the QR code to access additional product information:  
**Integrin  $\alpha$ V Rabbit pAb**

For Research Use Only. Not for Use in Diagnostic Procedures.

[Antibody](#) | [ELISA Kits](#) | [Protein](#) | [Reagents](#)