

IL-7R Rabbit pAb

CatalogNo: YT2341 Orthogonal Validated 

Key Features

Host Species

- Rabbit

Reactivity

- Human, Mouse, Monkey

Applications

- WB, ELISA

MW

- 52 60kD (Observed)

Isotype

- IgG

Recommended Dilution Ratios

WB 1:500-1:2000**ELISA 1:40000****Not yet tested in other applications.**

Storage

Storage* -15°C to -25°C/1 year (Do not lower than -25°C)**Formulation** Liquid in PBS containing 50% glycerol, 0.5% BSA and 0.02% sodium azide.

Basic Information

Clonality Polyclonal

Immunogen Information

Immunogen The antiserum was produced against synthesized peptide derived from human IL-7R/CD127. AA range: 410-459**Specificity** IL-7R Polyclonal Antibody detects endogenous levels of IL-7R protein.

Target Information

Gene name IL7R

Protein Name Interleukin-7 receptor subunit alpha

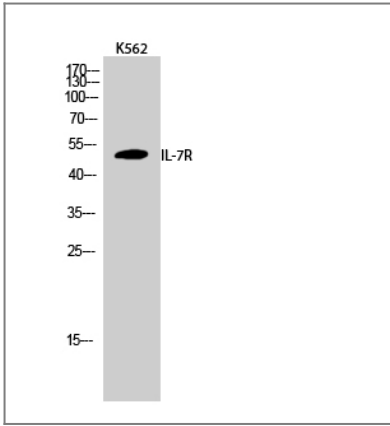
Organism	Gene ID	UniProt ID
Human	3575 ;	P16871 ;
Mouse	16197 ;	P16872 ;

Cellular Localization [Isoform 1]: Cell membrane; Single-pass type I membrane protein.; [Isoform 3]: Cell membrane; Single-pass type I membrane protein.; [Isoform 4]: Secreted.

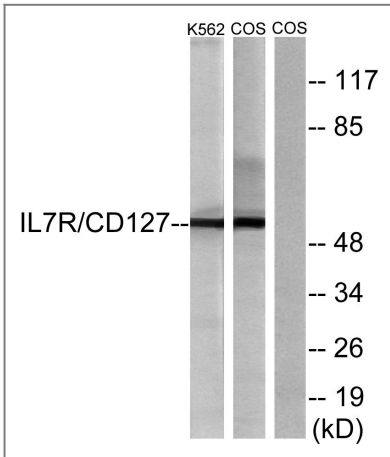
Tissue specificity B-cell,Epithelium,Spleen,Testis,

Function Disease:A genetic variation in transmembrane domain of IL7R is associated with susceptibility to multiple sclerosis (MS) [MIM:126200]. Overtransmission of the major 'C' allele coding for Thr-244 are detected in offspring affected with multiple sclerosis. In vitro analysis of transcripts from minigenes containing either 'C' allele (Thr-244) or 'T' allele (Ile-244) shows that the 'C' allele results in an approximately two-fold increase in the skipping of exon 6, leading to increased production of a soluble form of IL7R. Thus, the multiple sclerosis associated 'C' risk allele of IL7R would probably decrease membrane-bound expression of IL7R. As this risk allele is common in the general population, some additional triggers are probably required for the development and progression of MS.,Disease:Defects in IL7R are a cause of autosomal recessive severe combined immunodeficiency T-cell-negative/B-cell-positive/NK cell-positive (T(-)/B(+)/NK(+)) SCID [MIM:608971]. SCID refers to a genetically and clinically group of rare congenital disorders characterized by impairment of both humoral and cell-mediated immunity, leukopenia, and low or absent antibody levels. Patients with SCID present in infancy with recurrent, persistent infections by opportunistic organisms, including *Candida albicans*, *Pneumocystis carinii*, and cytomegalovirus, among many others. The common characteristic of all types of SCID is absence of T-cell-mediated cellular immunity due to a defect in T-cell development.,Domain:The box 1 motif is required for JAK interaction and/or activation.,Domain:The WSXWS motif appears to be necessary for proper protein folding and thereby efficient intracellular transport and cell-surface receptor binding.,Function:Receptor for interleukin-7. Also acts as a receptor for thymic stromal lymphopoietin (TSLP).,online information:IL7R mutation db,sequence Caution:Contaminating sequence. Potential poly-A sequence.,similarity:Belongs to the type I cytokine receptor family. Type 4 subfamily.,similarity:Contains 1 fibronectin type-III domain.,subunit:The IL7 receptor is a heterodimer of IL7R and IL2RG. The TSLP receptor is a heterodimer of CRLF2 and IL7R.,

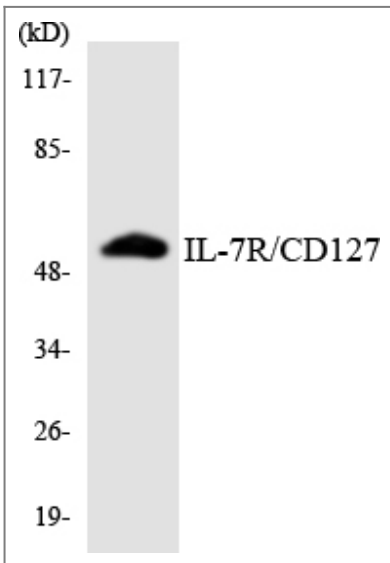
| Validation Data



Western Blot analysis of K562 cells using IL-7R Polyclonal Antibody



Western blot analysis of lysates from K562 and COS cells, treated with insulin 0.01U/ml 15', using IL-7R/CD127 Antibody. The lane on the right is blocked with the synthesized peptide.



Western blot analysis of the lysates from Jurkat cells using IL-7R/CD127 antibody.

Contact information

Orders: order@immunoway.com
 Support: tech@immunoway.com
 Telephone: 877-594-3616 (Toll Free), 408-747-0185
 Website: <http://www.immunoway.com>
 Address: 2200 Ringwood Ave San Jose, CA 95131 USA



Please scan the QR code to access additional product information:
IL-7R Rabbit pAb

