

## CDK5 Activator-binding C42 Rabbit pAb

CatalogNo: YT0836

### Key Features

#### Host Species

- Rabbit

#### Reactivity

- Human,Rat,Mouse,

#### Applications

- IHC,IF,ELISA

#### MW

- 68kD (Calculated)

#### Isotype

- IgG

### Recommended Dilution Ratios

IHC 1:100-1:300

ELISA 1:20000

IF 1:50-200

### Storage

#### Storage\*

-15°C to -25°C/1 year(Do not lower than -25°C)

#### Formulation

Liquid in PBS containing 50% glycerol, 0.5% BSA and 0.02% sodium azide.

### Basic Information

#### Clonality

Polyclonal

### Immunogen Information

#### Immunogen

The antiserum was produced against synthesized peptide derived from human CDK5RAP1. AA range:251-300

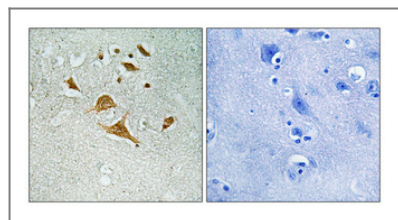
#### Specificity

CDK5 Activator-binding C42 Polyclonal Antibody detects endogenous levels of CDK5 Activator-binding C42 protein.

### Target Information

<b>Gene name</b>	CDK5RAP1		
<b>Protein Name</b>	CDK5 regulatory subunit-associated protein 1		
	<b>Organism</b>	<b>Gene ID</b>	<b>UniProt ID</b>
	Human	<a href="#">51654</a> ;	<a href="#">Q96SZ6</a> ;
	Mouse		<a href="#">Q8BTW8</a> ;
<b>Cellular Localization</b>	Mitochondrion .		
<b>Tissue specificity</b>	Expressed in heart, brain, placenta, lung, liver, skeletal muscle, kidney and pancreas (PubMed:10721722). Expressed in neurons of central nervous tissue (PubMed:10721722, PubMed:11882646). ; [Isoform 5]: Mainly expressed in brain, placenta and testis.; [Isoform 6]: High expression in placenta and lung.		
<b>Function</b>	cofactor: Binds 2 4Fe-4S clusters. One cluster is coordinated with 3 cysteines and an exchangeable S-adenosyl-L-methionine.,Function: Specifically inhibits CDK5 activation by CDK5R1.,sequence Caution: Translated as Glu.,similarity: Belongs to the methylthiotransferase family. MiaB subfamily.,similarity: Contains 1 MTTase N-terminal domain.,similarity: Contains 1 TRAM domain.,subunit: Interacts with CDK5R1 (p35 form). CDK5RAP1, CDK5RAP2 and CDK5RAP3 show competitive binding to CDK5R1. Forms a complex with CDK5R1 and CDK5.,tissue specificity: Widely expressed. Expressed in heart, brain, placenta, lung, liver, skeletal muscle, kidney and pancreas.,		

## Validation Data



Immunohistochemical analysis of paraffin-embedded Human brain. Antibody was diluted at 1:100(4° overnight). High-pressure and temperature Tris-EDTA,pH8.0 was used for antigen retrieval. Negative contrl (right) obtained from antibody was pre-absorbed by immunogen peptide.

## Contact information

**Orders:** [order@immunoway.com](mailto:order@immunoway.com)  
**Support:** [tech@immunoway.com](mailto:tech@immunoway.com)  
**Telephone:** 877-594-3616 (Toll Free), 408-747-0185  
**Website:** <http://www.immunoway.com>  
**Address:** 2200 Ringwood Ave San Jose, CA 95131 USA



Please scan the QR code to access additional product information:  
**CDK5 Activator-binding C42 Rabbit pAb**