

Bradykinin B1 R Rabbit pAb

CatalogNo: YT0514

Key Features

Host Species

- Rabbit

Reactivity

- Human,Rat,Mouse,

Applications

- WB,IF,ELISA

MW

- 40kD (Observed)

Isotype

- IgG

Recommended Dilution Ratios

WB 1:500-1:2000

IF 1:200-1:1000

ELISA 1:5000

Not yet tested in other applications.

Storage

Storage* -15°C to -25°C/1 year(Do not lower than -25°C)

Formulation Liquid in PBS containing 50% glycerol, 0.5% BSA and 0.02% sodium azide.

Basic Information

Clonality Polyclonal

Immunogen Information

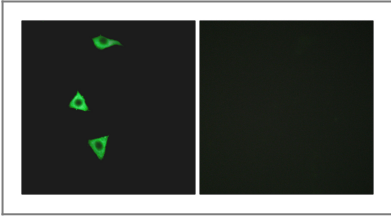
Immunogen The antiserum was produced against synthesized peptide derived from human BDKRB1. AA range:201-250

Specificity Bradykinin B1 R Polyclonal Antibody detects endogenous levels of Bradykinin B1 R protein.

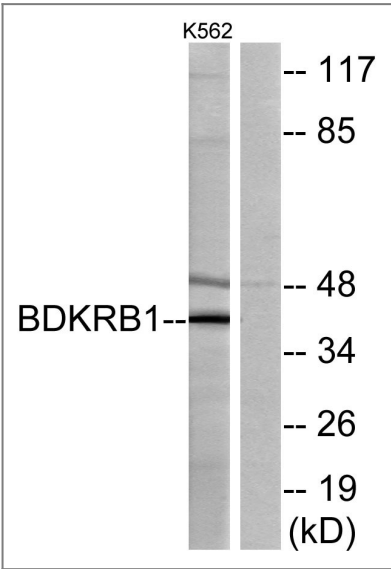
Target Information

Gene name	BDKRB1		
Protein Name	B1 bradykinin receptor		
	Organism	Gene ID	UniProt ID
	Human	623;	P46663;
	Mouse		Q61125;
Cellular Localization	Cell membrane; Multi-pass membrane protein.		
Tissue specificity	Lung,Skin,		
Function	Function:This is a receptor for bradykinin. Could be a factor in chronic pain and inflammation.,online information:Bradykinin receptor entry,similarity:Belongs to the G-protein coupled receptor 1 family.,		

Validation Data



Immunofluorescence analysis of LOVO cells, using BDKRB1 Antibody. The picture on the right is blocked with the synthesized peptide.



Western blot analysis of lysates from K562 cells, using BDKRB1 Antibody. The lane on the right is blocked with the synthesized peptide.

Contact information

Orders: order@immunoway.com
Support: tech@immunoway.com
Telephone: 877-594-3616 (Toll Free), 408-747-0185
Website: http://www.immunoway.com
Address: 2200 Ringwood Ave San Jose, CA 95131 USA



Please scan the QR code
to access additional
product information:
Bradykinin B1 R
Rabbit pAb

For Research Use Only. Not for Use in Diagnostic Procedures.

[Antibody](#) | [ELISA Kits](#) | [Protein](#) | [Reagents](#)