

ACSVL6 Rabbit pAb

CatalogNo: YT0095

Key Features

Host Species

- Rabbit

Reactivity

- Human,Rat,Mouse,

Applications

- WB,IHC,IF,ELISA

MW

- 75kD (Observed)

Isotype

- IgG

Recommended Dilution Ratios

WB 1:500-1:2000

IHC 1:100-1:300

IF 1:200-1:1000

ELISA 1:40000

Not yet tested in other applications.

Storage

Storage*

-15°C to -25°C/1 year(Do not lower than -25°C)

Formulation

Liquid in PBS containing 50% glycerol, 0.5% BSA and 0.02% sodium azide.

Basic Information

Clonality

Polyclonal

Immunogen Information

Immunogen

The antiserum was produced against synthesized peptide derived from human SLC27A5. AA range:481-530

Specificity

ACSVL6 Polyclonal Antibody detects endogenous levels of ACSVL6 protein.

Target Information

Gene name SLC27A5

Protein Name Bile acyl-CoA synthetase

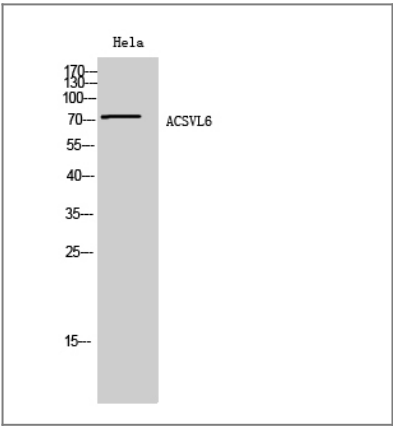
Organism	Gene ID	UniProt ID
Human	10998 ;	Q9Y2P5 ;
Mouse		Q4LDG0 ;

Cellular Localization Endoplasmic reticulum membrane ; Multi-pass membrane protein . Microsome . Cell membrane ; Multi-pass membrane protein .

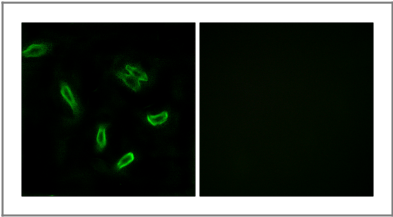
Tissue specificity Predominantly expressed in liver.

Function Catalytic activity:ATP + (25R)-3-alpha,7-alpha,12-alpha-trihydroxy-5-beta-cholestan-26-oate + CoA = AMP + diphosphate + (25R)-3-alpha,7-alpha,12-alpha-trihydroxy-5-beta-cholestanoyl-CoA.,Catalytic activity:ATP + cholate + CoA = AMP + diphosphate + choloyl-CoA.,Function:Acyl-CoA synthetase involved in bile acid metabolism. Proposed to catalyze the first step in the conjugation of C24 bile acids (choloneates) to glycine and taurine before excretion into bile canaliculi by activating them to their CoA thioesters. Seems to activate secondary bile acids entering the liver from the enterohepatic circulation. In vitro, also activates 3-alpha,7-alpha,12-alpha-trihydroxy-5-beta-cholestanate (THCA), the C27 precursor of cholic acid deriving from the de novo synthesis from cholesterol.,similarity:Belongs to the ATP-dependent AMP-binding enzyme family.,tissue specificity:Predominantly expressed in liver.,

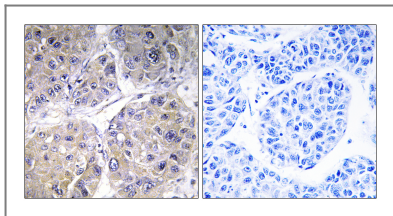
Validation Data



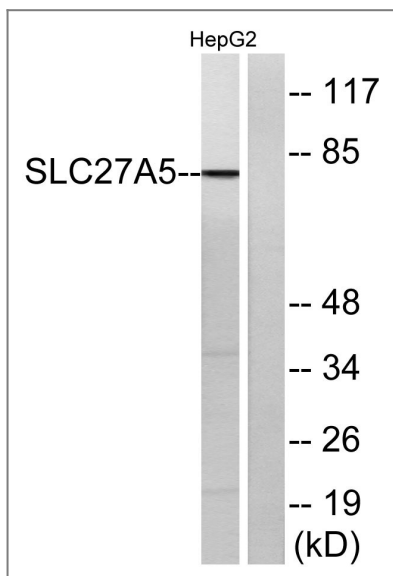
Western Blot analysis of HeLa cells using ACSVL6 Polyclonal Antibody diluted at 1:1000



Immunofluorescence analysis of A549 cells, using SLC27A5 Antibody. The picture on the right is blocked with the synthesized peptide.



Immunohistochemistry analysis of paraffin-embedded human liver carcinoma tissue, using SLC27A5 Antibody. The picture on the right is blocked with the synthesized peptide.



Western blot analysis of lysates from HepG2 cells, using SLC27A5 Antibody. The lane on the right is blocked with the synthesized peptide.

Contact information

Orders: order@immunoway.com
 Support: tech@immunoway.com
 Telephone: 877-594-3616 (Toll Free), 408-747-0185
 Website: <http://www.immunoway.com>
 Address: 2200 Ringwood Ave San Jose, CA 95131 USA



Please scan the QR code to access additional product information:
ACSVL6 Rabbit pAb

For Research Use Only. Not for Use in Diagnostic Procedures.

[Antibody](#) | [ELISA Kits](#) | [Protein](#) | [Reagents](#)