

A Cyclase IX Rabbit pAb

CatalogNo: YT0031

| Key Features

Host Species

- Rabbit

Reactivity

- Human, Mouse

Applications

- WB, IHC, IF, ELISA

MW

- 150kD (Observed)

Isotype

- IgG

| Recommended Dilution Ratios

WB 1:500-1:2000

IHC 1:100-1:300

ELISA 1:10000

IF 1:50-200

| Storage

Storage*

-15°C to -25°C/1 year (Do not lower than -25°C)

Formulation

Liquid in PBS containing 50% glycerol, 0.5% BSA and 0.02% sodium azide.

| Basic Information

Clonality

Polyclonal

| Immunogen Information

Immunogen

The antiserum was produced against synthesized peptide derived from human ADCY9. AA range:137-186

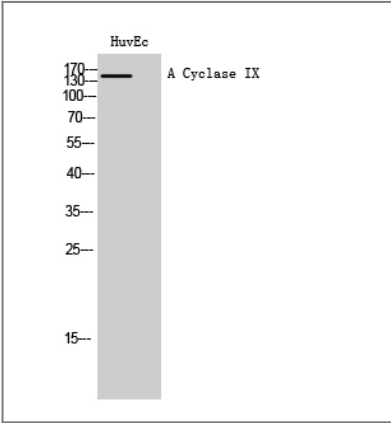
Specificity

A Cyclase IX Polyclonal Antibody detects endogenous levels of A Cyclase IX protein.

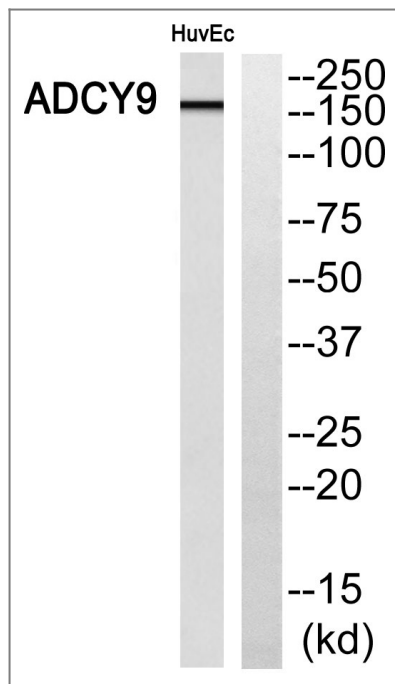
| Target Information

Gene name	ADCY9		
Protein Name	Adenylate cyclase type 9		
	Organism	Gene ID	UniProt ID
	Human	115;	O60503;
	Mouse		P51830;
Cellular Localization	Cell membrane ; Multi-pass membrane protein .		
Tissue specificity	Detected in skeletal muscle, pancreas, lung, heart, kidney, liver, brain and placenta (PubMed:9628827, PubMed:10987815). Expressed in multiple cells of the lung, with expression highest in airway smooth muscle (PubMed:12972952).		
Function	Catalytic activity:ATP = 3',5'-cyclic AMP + diphosphate.,cofactor:Binds 2 magnesium ions per subunit.,enzyme regulation:Insensitive to calcium/calmodulin, forskolin and somatostatin. Stimulated by beta-adrenergic receptor activation.,Function:May play a fundamental role in situations where fine interplay between intracellular calcium and cAMP determines the cellular function. May be a physiologically relevant docking site for calcineurin.,similarity:Belongs to the adenylyl cyclase class-4/guanylyl cyclase family.,similarity:Contains 2 guanylate cyclase domains.,tissue specificity:Expressed in multiple cells of the lung, with expression highest in airway smooth muscle.,		

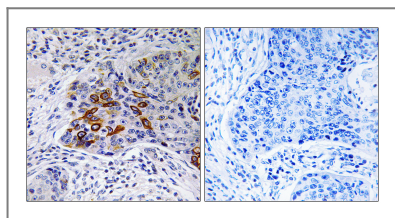
Validation Data



Western Blot analysis of HuvEc cells using A Cyclase IX Polyclonal Antibody diluted at 1:1000



Western blot analysis of ADCY9 Antibody. The lane on the right is blocked with the ADCY9 peptide.



Immunohistochemistry analysis of paraffin-embedded human lung carcinoma, using ADCY9 Antibody. The lane on the right is blocked with the ADCY9 peptide.

Contact information

Orders: order@immunoway.com
 Support: tech@immunoway.com
 Telephone: 877-594-3616 (Toll Free), 408-747-0185
 Website: <http://www.immunoway.com>
 Address: 2200 Ringwood Ave San Jose, CA 95131 USA



Please scan the QR code to access additional product information:
A Cyclase IX Rabbit pAb

For Research Use Only. Not for Use in Diagnostic Procedures.

[Antibody](#) | [ELISA Kits](#) | [Protein](#) | [Reagents](#)