

eNOS (Phospho Ser1177) Rabbit pAb

CatalogNo: YP0514

Orthogonal Validated 

Key Features

Host Species

- Rabbit

Reactivity

- Human, Mouse, Rat

Applications

- WB, IF, ELISA

MW

- 130-140kD (Observed)

Isotype

- IgG

Recommended Dilution Ratios

WB 1:500-1:2000**IF 1:200-1:1000****ELISA 1:20000****Not yet tested in other applications.**

Storage

Storage*

-15°C to -25°C/1 year (Do not lower than -25°C)

Formulation

Liquid in PBS containing 50% glycerol, 0.5% BSA and 0.02% sodium azide.

Basic Information

Clonality

Polyclonal

Immunogen Information

Immunogen

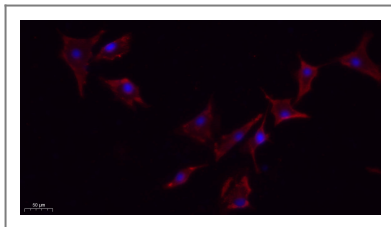
The antiserum was produced against synthesized peptide derived from human eNOS around the phosphorylation site of Ser1176. AA range: 1144-1193

Specificity Phospho-NOS3 (S1177) Polyclonal Antibody detects endogenous levels of NOS3 protein only when phosphorylated at S1177. The name of modified sites may be influenced by many factors, such as species (the modified site was not originally found in human samples) and the change of protein sequence (the previous protein sequence is incomplete, and the protein sequence may be prolonged with the development of protein sequencing technology). When naming, we will use the "numbers" in historical reference to keep the sites consistent with the reports. The antibody binds to the following modification sequence (lowercase letters are modification sites):TQsFS

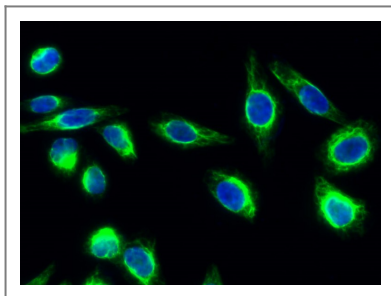
| Target Information

Gene name	NOS3		
Protein Name	Nitric oxide synthase endothelial		
	Organism	Gene ID	UniProt ID
	Human	4846 ;	P29474 ;
	Mouse	18127 ;	P70313 ;
	Rat	24600 ;	Q62600 ;
Cellular Localization	Cell membrane. Membrane, caveola. Cytoplasm, cytoskeleton. Golgi apparatus. Specifically associates with actin cytoskeleton in the G2 phase of the cell cycle; which is favored by interaction with NOSIP and results in a reduced enzymatic activity.		
Tissue specificity	Platelets, placenta, liver and kidney.		
Function	Catalytic activity:L-arginine + n NADPH + n H(+) + m O(2) = citrulline + nitric oxide + n NADP(+).,cofactor:Binds 1 FAD.,cofactor:Binds 1 FMN.,cofactor:Heme group.,cofactor:Tetrahydrobiopterin (BH4). May stabilize the dimeric form of the enzyme.,enzyme regulation:Stimulated by calcium/calmodulin. Inhibited by NOSIP and NOSTRIN.,Function:Produces nitric oxide (NO) which is implicated in vascular smooth muscle relaxation through a cGMP-mediated signal transduction pathway. NO mediates vascular endothelial growth factor (VEGF)-induced angiogenesis in coronary vessels and promotes blood clotting through the activation of platelets.,online information:Nitric oxide synthase entry,polymorphism:Variation in NOS3 seem to be associated with susceptibility to coronary spasm.,similarity:Belongs to the NOS family.,similarity:Contains 1 FAD-binding FR-type domain.,similarity:Contains 1 flavodoxin-like domain.,subcellular location:Specifically associates with actin cytoskeleton in the G2 phase of the cell cycle; which is favored by interaction with NOSIP and results in a reduced enzymatic activity.,subunit:Homodimer. Interacts with NOSIP and NOSTRIN.,tissue specificity:Platelets, placenta, liver and kidney.,		

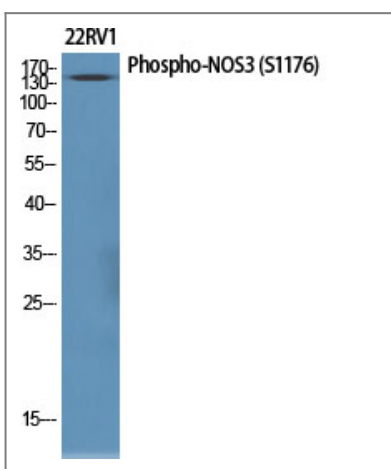
| Validation Data



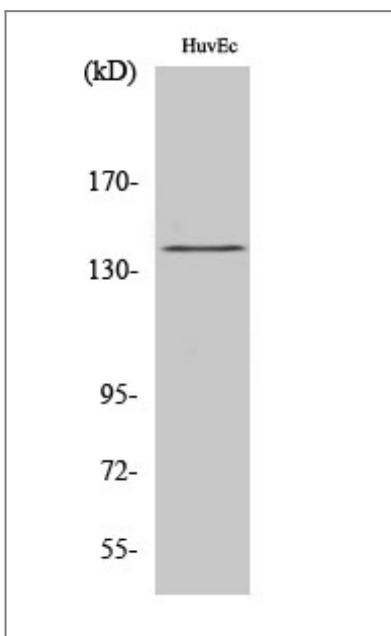
Immunofluorescence analysis of A549. 1,primary Antibody(red) was diluted at 1:200(4°C overnight). 2, Goat Anti Rabbit IgG (H&L) - Alexa Fluor 594 Secondary antibody was diluted at 1:1000(room temperature, 50min).3, Picture B: DAPI(blue) 10min.



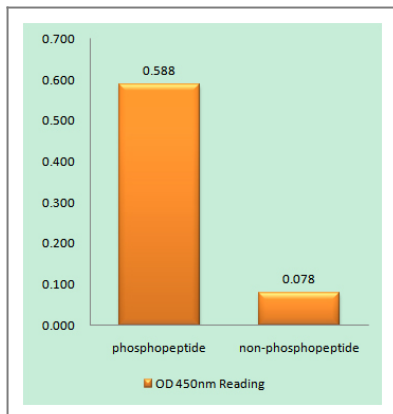
Immunofluorescence analysis of HeLa cell. 1,NOS3 (phospho Ser1177) Polyclonal Antibody(green) was diluted at 1:200(4° overnight). 2, Goat Anti Rabbit Alexa Fluor 488 Catalog:RS3211 was diluted at 1:1000(room temperature, 50min). 3 DAPI(blue) 10min.



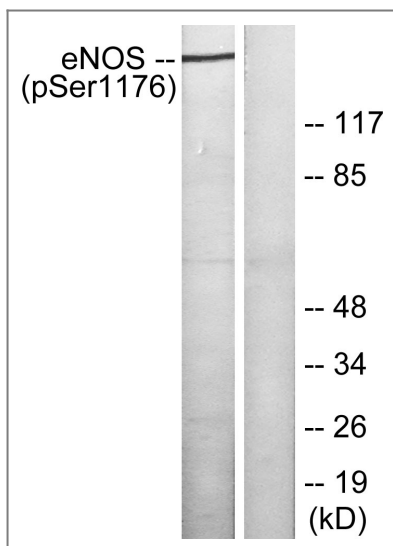
Western Blot analysis of various cells using Phospho-NOS3 (S1177) Polyclonal Antibody diluted at 1:1000



Western Blot analysis of HuvEc cells using Phospho-NOS3 (S1177) Polyclonal Antibody diluted at 1:1000



Enzyme-Linked Immunosorbent Assay (Phospho-ELISA) for Immunogen Phosphopeptide (Phospho-left) and Non-Phosphopeptide (Phospho-right), using eNOS (Phospho-Ser1176) Antibody



Western blot analysis of lysates from HeLa cells treated with Insulin 0.01U/ml 15', using eNOS (Phospho-Ser1176) Antibody. The lane on the right is blocked with the phospho peptide.

Contact information

Orders: order@immunoway.com
 Support: tech@immunoway.com
 Telephone: 877-594-3616 (Toll Free), 408-747-0185
 Website: <http://www.immunoway.com>
 Address: 2200 Ringwood Ave San Jose, CA 95131 USA



Please scan the QR code to access additional product information:
eNOS (Phospho Ser1177) Rabbit pAb

For Research Use Only. Not for Use in Diagnostic Procedures.

[Antibody](#) | [ELISA Kits](#) | [Protein](#) | [Reagents](#)