

## TACE (Phospho Thr735) Rabbit pAb

CatalogNo: YP0335

Orthogonal Validated 

### Key Features

#### Host Species

- Rabbit

#### Reactivity

- Human, Mouse, Rat

#### Applications

- WB, IHC, IF, ELISA

#### MW

- 93kD (Observed)

#### Isotype

- IgG

### Recommended Dilution Ratios

**WB 1:500-1:2000****IHC 1:100-1:300****ELISA 1:20000****IF 1:50-200**

### Storage

**Storage\*** -15°C to -25°C/1 year (Do not lower than -25°C)**Formulation** Liquid in PBS containing 50% glycerol, 0.5% BSA and 0.02% sodium azide.

### Basic Information

**Clonality** Polyclonal

### Immunogen Information

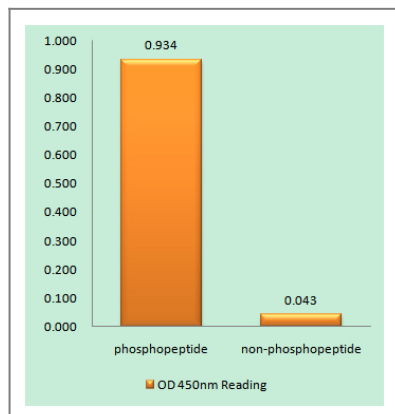
**Immunogen** The antiserum was produced against synthesized peptide derived from human ADAM 17 around the phosphorylation site of Thr735. AA range: 701-750

**Specificity** Phospho-TACE (T735) Polyclonal Antibody detects endogenous levels of TACE protein only when phosphorylated at T735. The name of modified sites may be influenced by many factors, such as species (the modified site was not originally found in human samples) and the change of protein sequence (the previous protein sequence is incomplete, and the protein sequence may be prolonged with the development of protein sequencing technology). When naming, we will use the "numbers" in historical reference to keep the sites consistent with the reports. The antibody binds to the following modification sequence (lowercase letters are modification sites):PQtPG

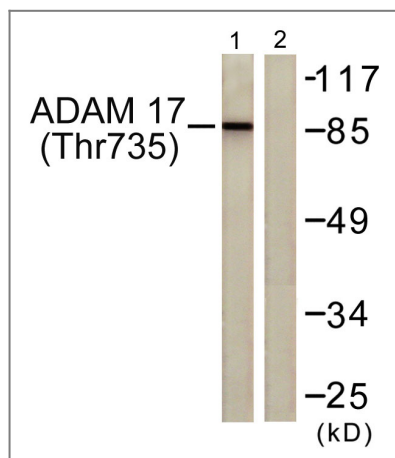
## | Target Information

Gene name	ADAM17		
Protein Name	Disintegrin and metalloproteinase domain-containing protein 17		
	Organism	Gene ID	UniProt ID
	Human	<a href="#">6868</a> ;	<a href="#">P78536</a> ;
	Mouse	<a href="#">11491</a> ;	<a href="#">Q9Z0F8</a> ;
	Rat	<a href="#">57027</a> ;	<a href="#">Q9Z1K9</a> ;
Cellular Localization	Membrane; Single-pass type I membrane protein.		
Tissue specificity	Ubiquitously expressed. Expressed at highest levels in adult heart, placenta, skeletal muscle, pancreas, spleen, thymus, prostate, testes, ovary and small intestine, and in fetal brain, lung, liver and kidney. Expressed in natural killer cells (at protein level) (PubMed:24337742).		
Function	Catalytic activity:Narrow endopeptidase specificity. Cleaves Pro-Leu-Ala-Gln-Ala- -Val-Arg-Ser-Ser-Ser in the membrane-bound, 26-kDa form of tumor necrosis factor alpha (TNF-alpha). Similarly cleaves other membrane-anchored, cell-surface proteins to 'shed' the extracellular domains.,cofactor:Binds 1 zinc ion per subunit.,Domain:Must be membrane anchored to cleave the different substrates. The cytoplasmic domain is not required for the this activity. Only the catalytic domain is essential to shed TNF and p75 TNFR.,Domain:The conserved cysteine present in the cysteine-switch motif binds the catalytic zinc ion, thus inhibiting the enzyme. The dissociation of the cysteine from the zinc ion upon the activation-peptide release activates the enzyme.,Function:Cleaves the membrane-bound precursor of TNF-alpha to its mature soluble form. Responsible for the proteolytic release of several other cell-surface proteins, including p75 TNF-receptor, interleukin 1 receptor type II, p55 TNF-receptor, transforming growth factor-alpha, L-selectin, growth hormone receptor, MUC1 and the amyloid precursor protein. Also involved in the activation of Notch pathway.,induction:In arthritis-affected cartilage.,online information:Tumor necrosis factor alpha-converting enzyme entry,PTM:Phosphorylated. Stimulation by growth factor or phorbol 12-myristate 13-acetate induces phosphorylation of Ser-819 but decreases phosphorylation of Ser-791.,PTM:The precursor is cleaved by a furin endopeptidase.,similarity:Contains 1 disintegrin domain.,similarity:Contains 1 peptidase M12B domain.,subunit:Interacts with MAD2L1 and MUC1.,tissue specificity:Ubiquitously expressed. Expressed at highest levels in adult heart, placenta, skeletal muscle, pancreas, spleen, thymus, prostate, testes, ovary and small intestine, and in fetal brain, lung, liver and kidney.,		

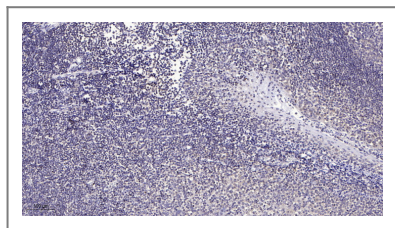
## Validation Data



Enzyme-Linked Immunosorbent Assay (Phospho-ELISA) for Immunogen Phosphopeptide (Phospho-left) and Non-Phosphopeptide (Phospho-right), using ADAM 17 (Phospho-Thr735) Antibody



Western blot analysis of lysates from K562 cells treated with UV 5', using ADAM 17 (Phospho-Thr735) Antibody. The lane on the right is blocked with the phospho peptide.



Immunohistochemical analysis of paraffin-embedded human tonsil. 1, Antibody was diluted at 1:200(4° overnight). 2, Tris-EDTA,pH9.0 was used for antigen retrieval. 3,Secondary antibody was diluted at 1:200(room temperature, 30min).

## Contact information

Orders: order@immunoway.com  
Support: tech@immunoway.com  
Telephone: 877-594-3616 (Toll Free), 408-747-0185  
Website: <http://www.immunoway.com>  
Address: 2200 Ringwood Ave San Jose, CA 95131 USA



Please scan the QR code to access additional product information:  
**TACE (Phospho Thr735) Rabbit pAb**

