

WDR82 Rabbit pAb

CatalogNo: YN4331

| Key Features

Host Species

- Rabbit

Reactivity

- Human, Mouse

Applications

- WB

MW

- 34kD (Calculated)

Isotype

- IgG

| Recommended Dilution Ratios

WB 1:500-2000

| Storage

Storage* -15°C to -25°C/1 year (Do not lower than -25°C)

Formulation Liquid in PBS containing 50% glycerol, 0.5% BSA and 0.02% sodium azide.

| Basic Information

Clonality Polyclonal

| Immunogen Information

Immunogen Synthesized peptide derived from human WDR82 AA range: 219-269

Specificity This antibody detects endogenous levels of WDR82 at Human/Mouse

| Target Information

Gene name WDR82 WDR82A UNQ9342/PRO34047

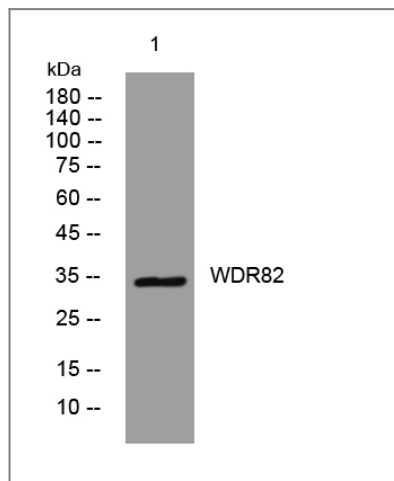
Protein Name WDR82

Organism	Gene ID	UniProt ID
Human	80335;	Q6UXN9;
Mouse	77305;	Q8BFQ4;

Cellular Localization Nucleus . Chromosome . Associates with chromatin (PubMed:20516061). Recruited at sites of high RNA polymerase II occupancy (By similarity). .

Function Caution:The gene encoding this protein shares one overlapping exon with TMEM113.,Function:Component of the Set1/Ash2 histone methyltransferase (HMT) complex, a complex that specifically methylates 'Lys-4' of histone H3.,similarity:Belongs to the WD repeat SWD2 family.,similarity:Contains 6 WD repeats.,subunit:Interacts with CUL4B. Component of the SET1 complex, at least composed of the catalytic subunit (SETD1A or SETD1B), WDR5, WDR82, RBBP5, ASH2/ASH2L and CXXC1/CFP1.,

Validation Data



Western blot analysis of lysates from Jurkat cells, primary antibody was diluted at 1:1000, 4°over night

Contact information

Orders: order@immunoway.com
Support: tech@immunoway.com
Telephone: 877-594-3616 (Toll Free), 408-747-0185
Website: <http://www.immunoway.com>
Address: 2200 Ringwood Ave San Jose, CA 95131 USA



Please scan the QR code to access additional product information:
WDR82 Rabbit pAb