

## F16A1 Rabbit pAb

CatalogNo: YN4322

### Key Features

#### Host Species

- Rabbit

#### Reactivity

- Human, Mouse

#### Applications

- WB

#### MW

- 114kD (Calculated)

#### Isotype

- IgG

### Recommended Dilution Ratios

WB 1:500-2000

### Storage

**Storage\*** -15°C to -25°C/1 year (Do not lower than -25°C)

**Formulation** Liquid in PBS containing 50% glycerol, 0.5% BSA and 0.02% sodium azide.

### Basic Information

**Clonality** Polyclonal

### Immunogen Information

**Immunogen** Synthesized peptide derived from human F16A1 AA range: 182-232

**Specificity** This antibody detects endogenous levels of F16A1 at Human/Mouse

### Target Information

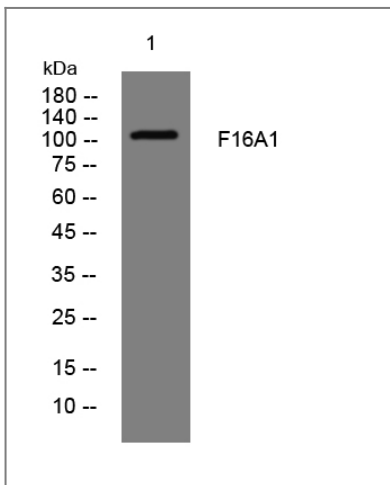
**Gene name** FAM160A1

**Protein Name** F16A1

Organism	Gene ID	UniProt ID
Human	<a href="#">729830</a> ;	<a href="#">Q05DH4</a> ;
Mouse	<a href="#">229488</a> ;	<a href="#">Q505K2</a> ;

**Function** sequence Caution:Contaminating sequence. Potential poly-A sequence.,sequence Caution:Translation N-terminally extended.,similarity:Belongs to the UPF0518 family.,

## Validation Data



Western blot analysis of lysates from U2OS cells, primary antibody was diluted at 1:1000, 4°over night

## Contact information

Orders: [order@immunoway.com](mailto:order@immunoway.com)  
Support: [tech@immunoway.com](mailto:tech@immunoway.com)  
Telephone: 877-594-3616 (Toll Free), 408-747-0185  
Website: <http://www.immunoway.com>  
Address: 2200 Ringwood Ave San Jose, CA 95131 USA



Please scan the QR code to access additional product information:  
**F16A1 Rabbit pAb**

For Research Use Only. Not for Use in Diagnostic Procedures.

[Antibody](#) | [ELISA Kits](#) | [Protein](#) | [Reagents](#)