

## CD048 Rabbit pAb

CatalogNo: YN4152

### | Key Features

#### Host Species

- Rabbit

#### Reactivity

- Human, Mouse

#### Applications

- IHC, IF

#### MW

- 10kD (Calculated)

#### Isotype

- IgG

### | Recommended Dilution Ratios

IHC 1:50-200

IF 1:50-200

### | Storage

**Storage\*** -15°C to -25°C/1 year (Do not lower than -25°C)

**Formulation** Liquid in PBS containing 50% glycerol, 0.5% BSA and 0.02% sodium azide.

### | Basic Information

**Clonality** Polyclonal

### | Immunogen Information

**Immunogen** Synthesized peptide derived from human CD048 AA range: 24-74

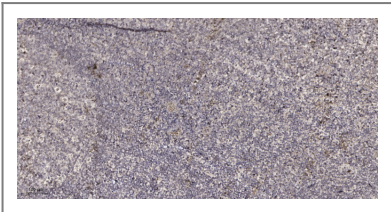
**Specificity** This antibody detects endogenous levels of CD048 at Human/Mouse

### | Target Information

**Gene name** C4orf48 Chr4\_55

Protein Name	CD048		
	Organism	Gene ID	UniProt ID
	Human		<a href="#">Q5BLP8</a> ;
	Mouse	<a href="#">381633</a> ;	<a href="#">Q3UR78</a> ;
Cellular Localization	Secreted .		
Tissue specificity	Brain-specific (at protein level).		

| Validation Data



Immunohistochemical analysis of paraffin-embedded human tonsil. 1, Antibody was diluted at 1:200(4° overnight). 2, Tris-EDTA,pH9.0 was used for antigen retrieval. 3,Secondary antibody was diluted at 1:200(room temperature, 30min).

| Contact information

Orders: order@immunoway.com  
Support: tech@immunoway.com  
Telephone: 877-594-3616 (Toll Free), 408-747-0185  
Website: http://www.immunoway.com  
Address: 2200 Ringwood Ave San Jose, CA 95131 USA



Please scan the QR code to access additional product information:  
**CD048 Rabbit pAb**