

GMCLL Rabbit pAb

CatalogNo: YN4083

Key Features

Host Species

- Rabbit

Reactivity

- Human, Mouse

Applications

- WB

MW

- 58kD (Calculated)

Isotype

- IgG

Recommended Dilution Ratios

WB 1:500-2000

Storage

Storage* -15°C to -25°C/1 year (Do not lower than -25°C)

Formulation Liquid in PBS containing 50% glycerol, 0.5% BSA and 0.02% sodium azide.

Basic Information

Clonality Polyclonal

Immunogen Information

Immunogen Synthesized peptide derived from human GMCLL AA range: 20-70

Specificity This antibody detects endogenous levels of GMCLL at Human/Mouse

Target Information

Gene name GMCL1P1 GCL GMCL1L

Protein Name GMCLL

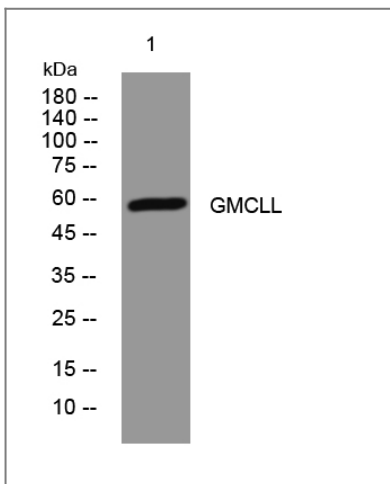
Organism	Gene ID	UniProt ID
Human		Q8NEA9 ;
Mouse	100040533 ;	Q99N64 ;

Cellular Localization Nucleus matrix .

Tissue specificity Expressed predominantly in testis.

Function Function:Possible function in spermatogenesis. Enhances the degradation of MDM2 and increases the amount of p53 probably by modulating the nucleocytoplasmic transport (By similarity). Probable substrate-specific adapter of an E3 ubiquitin-protein ligase complex which mediates the ubiquitination and subsequent proteasomal degradation of target proteins.,Function:Possible function in spermatogenesis. Enhances the degradation of MDM2 and increases the amount of p53 probably by modulating the nucleocytoplasmic transport.,pathway:Protein modification; protein ubiquitination.,similarity:Contains 1 BTB (POZ) domain.,subunit:Interacts with TMPO-beta, TSG101 and TFDP2 (By similarity). Interacts with EMD.,subunit:Interacts with TMPO-Beta, TSG101 and TFDP2. Interacts with EMD (By similarity). Interacts with CUL3.,

Validation Data



Western blot analysis of lysates from DU145 cells, primary antibody was diluted at 1:1000, 4° over night

Contact information

Orders: order@immunoway.com
Support: tech@immunoway.com
Telephone: 877-594-3616 (Toll Free), 408-747-0185
Website: <http://www.immunoway.com>
Address: 2200 Ringwood Ave San Jose, CA 95131 USA



Please scan the QR code to access additional product information:
GMCLL Rabbit pAb

