

## GPN3 Rabbit pAb

CatalogNo: YN4033

### Key Features

#### Host Species

- Rabbit

#### Reactivity

- Human, Mouse, Rat

#### Applications

- WB

#### MW

- 31kD (Calculated)

#### Isotype

- IgG

### Recommended Dilution Ratios

WB 1:500-2000

### Storage

**Storage\*** -15°C to -25°C/1 year (Do not lower than -25°C)

**Formulation** Liquid in PBS containing 50% glycerol, 0.5% BSA and 0.02% sodium azide.

### Basic Information

**Clonality** Polyclonal

### Immunogen Information

**Immunogen** Synthesized peptide derived from human GPN3 AA range: 184-234

**Specificity** This antibody detects endogenous levels of GPN3 at Human/Mouse/Rat

### Target Information

**Gene name** GPN3 ATPBD1C AD-009 UNQ1876/PRO4319

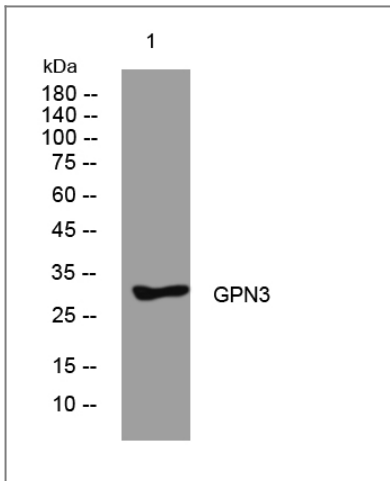
**Protein Name** GPN3

Organism	Gene ID	UniProt ID
Human	<a href="#">51184</a> ;	<a href="#">Q9UHW5</a> ;
Mouse	<a href="#">68080</a> ;	<a href="#">Q9D3W4</a> ;
Rat	<a href="#">360810</a> ;	<a href="#">Q6R518</a> ;

**Cellular Localization** intracellular,protein complex,

**Function** similarity:Belongs to the GPN-loop GTPase family.,

## Validation Data



Western blot analysis of lysates from A549 cells, primary antibody was diluted at 1:1000, 4° over night

## Contact information

Orders: [order@immunoway.com](mailto:order@immunoway.com)  
Support: [tech@immunoway.com](mailto:tech@immunoway.com)  
Telephone: 877-594-3616 (Toll Free), 408-747-0185  
Website: <http://www.immunoway.com>  
Address: 2200 Ringwood Ave San Jose, CA 95131 USA



Please scan the QR code to access additional product information:  
**GPN3 Rabbit pAb**

For Research Use Only. Not for Use in Diagnostic Procedures.

[Antibody](#) | [ELISA Kits](#) | [Protein](#) | [Reagents](#)