

GPTC4 Rabbit pAb

CatalogNo: YN3835

Key Features

Host Species

- Rabbit

Reactivity

- Human, Mouse, Rat

Applications

- WB

MW

- 49kD (Calculated)

Isotype

- IgG

Recommended Dilution Ratios

WB 1:500-2000

Storage

Storage* -15°C to -25°C/1 year (Do not lower than -25°C)

Formulation Liquid in PBS containing 50% glycerol, 0.5% BSA and 0.02% sodium azide.

Basic Information

Clonality Polyclonal

Immunogen Information

Immunogen Synthesized peptide derived from human GPTC4 AA range: 247-297

Specificity This antibody detects endogenous levels of GPTC4 at Human/Mouse/Rat

Target Information

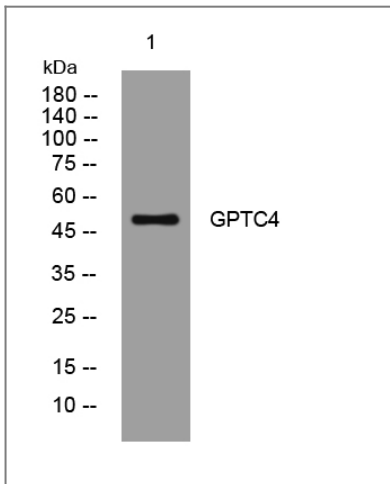
Gene name GPATCH4 GPATC4

Protein Name GPTC4

Organism	Gene ID	UniProt ID
Human	54865 ;	Q5T3I0 ;
Mouse	66614 ;	Q3TFK5 ;
Rat	295228 ;	Q566R3 ;

Function similarity:Contains 1 G-patch domain.,

Validation Data



Western blot analysis of lysates from HCT116 cells, primary antibody was diluted at 1:1000, 4° over night

Contact information

Orders: order@immunoway.com
Support: tech@immunoway.com
Telephone: 877-594-3616 (Toll Free), 408-747-0185
Website: <http://www.immunoway.com>
Address: 2200 Ringwood Ave San Jose, CA 95131 USA



Please scan the QR code to access additional product information:
GPTC4 Rabbit pAb

For Research Use Only. Not for Use in Diagnostic Procedures.

[Antibody](#) | [ELISA Kits](#) | [Protein](#) | [Reagents](#)