

## FLNC Rabbit pAb

CatalogNo: YN3834

### Key Features

#### Host Species

- Rabbit

#### Reactivity

- Human, Mouse

#### Applications

- IHC, IF

#### MW

- 300kD (Calculated)

#### Isotype

- IgG

### Recommended Dilution Ratios

IHC 1:50-200

IF 1:50-200

### Storage

**Storage\*** -15°C to -25°C/1 year (Do not lower than -25°C)

**Formulation** Liquid in PBS containing 50% glycerol, 0.5% BSA and 0.02% sodium azide.

### Basic Information

**Clonality** Polyclonal

### Immunogen Information

**Immunogen** Synthesized peptide derived from human FLNC AA range: 335-385

**Specificity** This antibody detects endogenous levels of FLNC at Human/Mouse

### Target Information

**Gene name** FLNC ABPL FLN2

**Protein Name** FLNC

Organism	Gene ID	UniProt ID
Human	<a href="#">2318;</a>	<a href="#">Q14315;</a>
Mouse	<a href="#">68794;</a>	<a href="#">Q8VHX6;</a>

**Cellular Localization**

Cytoplasm . Membrane ; Peripheral membrane protein . Cytoplasm, cytoskeleton . Cytoplasm, myofibril, sarcomere, Z line . A small amount localizes at membranes. In striated muscle cells, it predominantly localizes in myofibrillar Z lines, while a minor fraction localizes with subsarcolemme. Targeting to developing and mature Z lines is mediated by the intradomain insert.

**Tissue specificity**

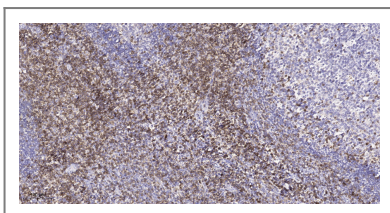
Highly expressed in striated muscles. Weakly expressed in thyroid, fetal brain, fetal lung, retina, spinal cord and bone marrow. Not expressed in testis, pancreas, adrenal gland, placenta, liver and kidney.

**Function**

developmental stage:Expressed in both differentiating and adult muscles.,Disease:Defects in FLNC are the cause of autosomal dominant filaminopathy [MIM:609524, 601419]. Myofibrillar myopathy (MFM) is a neuromuscular disorder, usually with an adult onset, characterized by focal myofibrillar destruction and pathological cytoplasmic protein aggregations. Autosomal dominant filaminopathy is a form of MFM characterized by morphological features of MFM and clinical features of a limb-girdle myopathy. A heterozygous nonsense mutation which segregates with the disease, has been identified in the FLNC gene.,Domain:Comprised of a NH2-terminal actin-binding domain, 24 internally homologous repeats and two hinge regions. Repeat 24 and the second hinge domain are important for dimer formation.,Domain:The filamin 20 repeat mediates interaction with XIRP1.,Domain:The intradomain insert is specific to FLNC and mediates the targeting to developing and mature Z-disks.,Function:Muscle-specific filamin, which plays a central role in muscle cells, probably by functioning as a large actin-cross-linking protein. May be involved in reorganizing the actin cytoskeleton in response to signaling events, and may also display structural functions at the Z-disks in muscle cells.,miscellaneous:Silenced in MKN28 and MKN74 gastric cancer cell lines due to aberrant methylation of the gene.,similarity:Belongs to the filamin family.,similarity:Contains 1 actin-binding domain.,similarity:Contains 2 CH (calponin-homology) domains.,similarity:Contains 24 filamin repeats.,subcellular location:A small amount localizes at membranes. In striated muscle cells, it predominantly localizes in myofibrillar Z-disks, while a minor fraction localizes with subsarcolemme.,subunit:Homodimer. Interacts with KY (By similarity). Interacts with FLNB, KCND2, ITGB1A, INPPL1, MYOT, MYOZ1 and MYOZ3. Interacts with sarcoglycans SGCD and SGCG.,tissue specificity:Highly expressed in striated muscles. Weakly expressed in thyroid, fetal brain, fetal lung, retina, spinal cord and bone marrow. Not expressed in testis, pancreas, adrenal gland, placenta, liver and kidney.,

---

**Validation Data**



Immunohistochemical analysis of paraffin-embedded human tonsil. 1, Tris-EDTA,pH9.0 was used for antigen retrieval. 2 Antibody was diluted at 1:200(4° overnight).3,Secondary antibody was diluted at 1:200(room temperature, 45min).

## | Contact information

Orders: order@immunoway.com  
Support: tech@immunoway.com  
Telephone: 877-594-3616 (Toll Free), 408-747-0185  
Website: <http://www.immunoway.com>  
Address: 2200 Ringwood Ave San Jose, CA 95131 USA



Please scan the QR code  
to access additional  
product information:  
**FLNC Rabbit pAb**

---

For Research Use Only. Not for Use in Diagnostic Procedures.

[Antibody](#) | [ELISA Kits](#) | [Protein](#) | [Reagents](#)