

## VCY1 Rabbit pAb

CatalogNo: YN3822

### Key Features

#### Host Species

- Rabbit

#### Reactivity

- Human

#### Applications

- WB

#### MW

- 14kD (Calculated)

#### Isotype

- IgG

### Recommended Dilution Ratios

WB 1:500-2000

### Storage

**Storage\*** -15°C to -25°C/1 year(Do not lower than -25°C)

**Formulation** Liquid in PBS containing 50% glycerol, 0.5% BSA and 0.02% sodium azide.

### Basic Information

**Clonality** Polyclonal

### Immunogen Information

**Immunogen** Synthesized peptide derived from human VCY1 AA range: 13-63

**Specificity** This antibody detects endogenous levels of VCY1 at Human

### Target Information

**Gene name** VCY BPY1 VCY1A; VCY1B BPY1B

**Protein Name** VCY1

**Organism**

Human

**Gene ID**

[353513](#);

**UniProt ID**

[O14598](#);

**Cellular Localization**

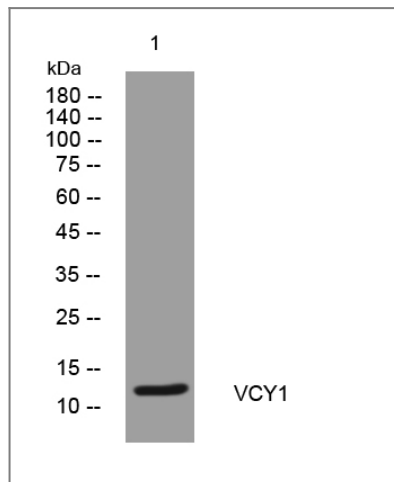
nucleolus,

**Tissue specificity** Expressed exclusively in testis.

**Function**

Function:May mediate a process in spermatogenesis or may play a role in sex ratio distortion.,similarity:Belongs to the VCX/VCY family.,tissue specificity:Expressed exclusively in testis.,

## Validation Data



Western blot analysis of lysates from DU145 cells, primary antibody was diluted at 1:1000, 4° over night

## Contact information

Orders: [order@immunoway.com](mailto:order@immunoway.com)  
Support: [tech@immunoway.com](mailto:tech@immunoway.com)  
Telephone: 877-594-3616 (Toll Free), 408-747-0185  
Website: <http://www.immunoway.com>  
Address: 2200 Ringwood Ave San Jose, CA 95131 USA



Please scan the QR code to access additional product information:  
**VCY1 Rabbit pAb**