

NTCP2 Rabbit pAb

CatalogNo: YN3733

Key Features

Host Species

- Rabbit

Reactivity

- Human, Mouse, Rat

Applications

- WB

MW

- 38kD (Calculated)

Isotype

- IgG

Recommended Dilution Ratios

WB 1:500-2000

Storage

Storage* -15°C to -25°C/1 year (Do not lower than -25°C)

Formulation Liquid in PBS containing 50% glycerol, 0.5% BSA and 0.02% sodium azide.

Basic Information

Clonality Polyclonal

Immunogen Information

Immunogen Synthesized peptide derived from human NTCP2 AA range: 46-96

Specificity This antibody detects endogenous levels of NTCP2 at Human/Mouse/Rat

Target Information

Gene name SLC10A2 ASBT ISBT NTCP2

Protein Name NTCP2

Organism	Gene ID	UniProt ID
Human	6555;	Q12908;
Mouse	20494;	P70172;
Rat	29500;	Q62633;

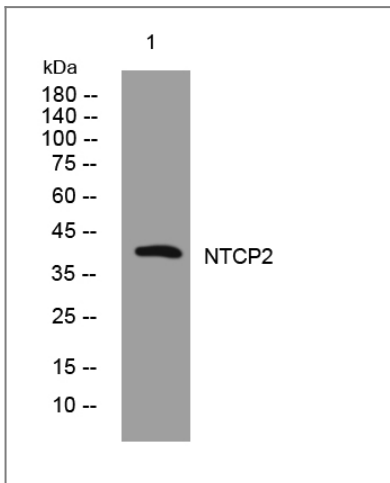
Cellular Localization

Membrane; Multi-pass membrane protein.

Function

Disease:Defects in SLC10A2 are a cause of primary bile acid malabsorption (PBAM) [MIM:601295]. PBAM is an idiopathic intestinal disorder associated with congenital diarrhea, steatorrhea, interruption of the enterohepatic circulation of bile acids, and reduced plasma cholesterol levels.,Function:Plays a critical role in the sodium-dependent reabsorption of bile acids from the lumen of the small intestine. Plays a key role in cholesterol metabolism.,similarity:Belongs to the sodium:bile acid symporter family.,subunit:Monomer and homodimer.,

Validation Data



Western blot analysis of lysates from KB cells, primary antibody was diluted at 1:1000, 4° over night

Contact information

Orders: order@immunoway.com
Support: tech@immunoway.com
Telephone: 877-594-3616 (Toll Free), 408-747-0185
Website: <http://www.immunoway.com>
Address: 2200 Ringwood Ave San Jose, CA 95131 USA



Please scan the QR code to access additional product information:
NTCP2 Rabbit pAb

