

S35G6 Rabbit pAb

CatalogNo: YN3664

Key Features

Host Species

- Rabbit

Reactivity

- Human

Applications

- WB

MW

- 37kD (Calculated)

Isotype

- IgG

Recommended Dilution Ratios

WB 1:500-2000

Storage

Storage*

-15°C to -25°C/1 year(Do not lower than -25°C)

Formulation

Liquid in PBS containing 50% glycerol, 0.5% BSA and 0.02% sodium azide.

Basic Information

Clonality

Polyclonal

Immunogen Information

Immunogen

Synthesized peptide derived from human S35G6 AA range: 286-336

Specificity

This antibody detects endogenous levels of S35G6 at Human

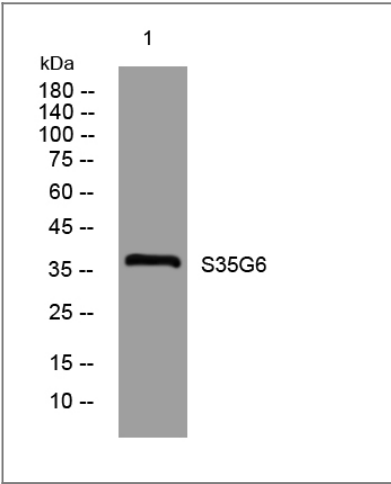
Target Information

Gene name

SLC35G6 AMAC1L3 TMEM21B

Protein Name	S35G6		
	Organism	Gene ID	UniProt ID
	Human	643664;	P0C7Q6;
Cellular Localization	Membrane ; Multi-pass membrane protein .		
Tissue specificity	Expressed in placenta and testis.		
Function	miscellaneous:The gene encoding this protein appears to have arisen by SVA-mediated retrotransposition of the AMAC1L3 gene in the primate lineage.,miscellaneous:This gene appears to be the source locus of an SVA-mediated retrotransposition event that gave rise to AMAC1, AMAC1L1 and AMAC1L2 genes.,similarity:Contains 2 DUF6 domains.,tissue specificity:Expressed in placenta and testis.,tissue specificity:Expressed in testis.,		

| Validation Data



Western blot analysis of lysates from MCF-7 cells, primary antibody was diluted at 1:1000, 4°over night

| Contact information

Orders: order@immunoway.com
Support: tech@immunoway.com
Telephone: 877-594-3616 (Toll Free), 408-747-0185
Website: http://www.immunoway.com
Address: 2200 Ringwood Ave San Jose, CA 95131 USA



Please scan the QR code to access additional product information:
S35G6 Rabbit pAb