

## DB123 Rabbit pAb

CatalogNo: YN3659

### Key Features

#### Host Species

- Rabbit

#### Reactivity

- Human

#### Applications

- IHC,IF

#### MW

- 7kD (Calculated)

#### Isotype

- IgG

### Recommended Dilution Ratios

IHC 1:50-200

IF 1:50-200

### Storage

**Storage\*** -15°C to -25°C/1 year(Do not lower than -25°C)

**Formulation** Liquid in PBS containing 50% glycerol, 0.5% BSA and 0.02% sodium azide.

### Basic Information

**Clonality** Polyclonal

### Immunogen Information

**Immunogen** Synthesized peptide derived from human DB123 AA range: 1-51

**Specificity** This antibody detects endogenous levels of DB123 at Human

### Target Information

**Gene name** DEFB123 DEFB23 UNQ1963/PRO4485

**Protein Name** DB123

**Organism**

Human

**Gene ID**

[245936](#);

**UniProt ID**

[Q8N688](#);

**Cellular Localization**

Secreted .

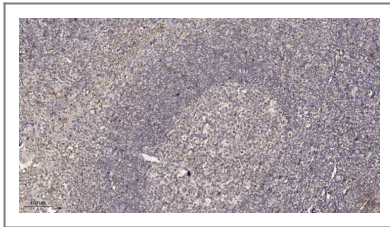
**Tissue specificity**

Abundant expression in the male reproductive tract only. Abundant expressed in testis and the caput region of epididymis, but low in the corpus region.

**Function**

Function:Has antibacterial activity .,similarity:Belongs to the beta-defensin family.,

## Validation Data



Immunohistochemical analysis of paraffin-embedded human tonsil. 1, Antibody was diluted at 1:200(4° overnight). 2, Tris-EDTA,pH9.0 was used for antigen retrieval. 3,Secondary antibody was diluted at 1:200(room temperature, 30min).

## Contact information

Orders: [order@immunoway.com](mailto:order@immunoway.com)  
Support: [tech@immunoway.com](mailto:tech@immunoway.com)  
Telephone: 877-594-3616 (Toll Free), 408-747-0185  
Website: <http://www.immunoway.com>  
Address: 2200 Ringwood Ave San Jose, CA 95131 USA



Please scan the QR code to access additional product information:  
**DB123 Rabbit pAb**

For Research Use Only. Not for Use in Diagnostic Procedures.

[Antibody](#) | [ELISA Kits](#) | [Protein](#) | [Reagents](#)