

LYPD8 Rabbit pAb

CatalogNo: YN3586

Key Features

Host Species

- Rabbit

Reactivity

- Human, Mouse

Applications

- WB

MW

- 26kD (Calculated)

Isotype

- IgG

Recommended Dilution Ratios

WB 1:500-2000

Storage

Storage*

-15°C to -25°C/1 year (Do not lower than -25°C)

Formulation

Liquid in PBS containing 50% glycerol, 0.5% BSA and 0.02% sodium azide.

Basic Information

Clonality

Polyclonal

Immunogen Information

Immunogen

Synthesized peptide derived from human LYPD8 AA range: 42-92

Specificity

This antibody detects endogenous levels of LYPD8 at Human/Mouse

Target Information

Gene name

LYPD8 UNQ511/PRO1026

Protein Name LYPD8

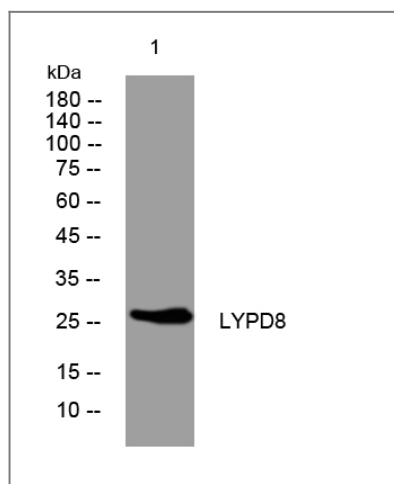
Organism	Gene ID	UniProt ID
Human	646627;	Q6UX82;
Mouse	70163;	Q9D7S0;

Cellular Localization Cell membrane ; Lipid-anchor, GPI-anchor . Secreted . Secreted into the lumen of the colon following cleavage of the GPI-anchor. .

Tissue specificity Expressed in the large intestine. Preferentially expressed on the epithelial layer exposed to the lumen (at protein level).

Function similarity:Belongs to the CNF-like-inhibitor family.,

Validation Data



Western blot analysis of lysates from HpeG2 cells, primary antibody was diluted at 1:1000, 4°over night

Contact information

Orders: order@immunoway.com
Support: tech@immunoway.com
Telephone: 877-594-3616 (Toll Free), 408-747-0185
Website: <http://www.immunoway.com>
Address: 2200 Ringwood Ave San Jose, CA 95131 USA



Please scan the QR code to access additional product information:
LYPD8 Rabbit pAb