

## LRRT1 Rabbit pAb

CatalogNo: YN3579

### Key Features

#### Host Species

- Rabbit

#### Reactivity

- Human, Mouse, Rat

#### Applications

- WB

#### MW

- 57kD (Calculated)

#### Isotype

- IgG

### Recommended Dilution Ratios

WB 1:500-2000

### Storage

**Storage\*** -15°C to -25°C/1 year (Do not lower than -25°C)

**Formulation** Liquid in PBS containing 50% glycerol, 0.5% BSA and 0.02% sodium azide.

### Basic Information

**Clonality** Polyclonal

### Immunogen Information

**Immunogen** Synthesized peptide derived from human LRRT1 AA range: 153-203

**Specificity** This antibody detects endogenous levels of LRRT1 at Human/Mouse/Rat

### Target Information

**Gene name** LRRTM1 UNQ675/PRO1309

**Protein Name** LRRT1

Organism	Gene ID	UniProt ID
Human	<a href="#">347730</a> ;	<a href="#">Q86UE6</a> ;
Mouse	<a href="#">74342</a> ;	<a href="#">Q8K377</a> ;
Rat	<a href="#">679668</a> ;	<a href="#">D4A6D8</a> ;

**Cellular Localization**

Cell membrane ; Single-pass type I membrane protein . Cell junction, synapse, postsynaptic cell membrane ; Single-pass type I membrane protein .

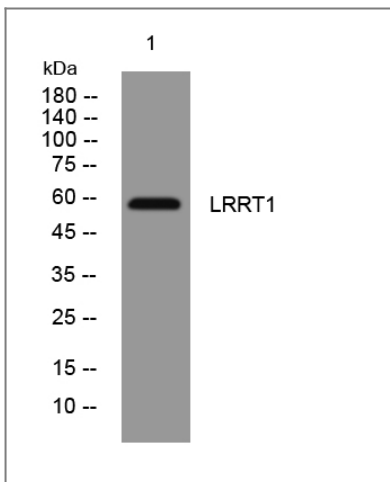
**Tissue specificity**

Predominantly expressed in forebrain regions including thalamus and cerebral cortex.

**Function**

Function:May play a role during the development of specific forebrain structures by influencing neuronal differentiation and connectivity, with a possible role in intracellular trafficking within axons.,miscellaneous:Is an imprinted gene that shows parent-of-origin association with human handedness and schizophrenia. Is a candidate gene for involvement in several common neurodevelopmental disorders and may have played a role in human cognitive and behavioral evolution.,online information:The hands to say it -Issue 91 of February 2008,similarity:Belongs to the LRRTM family.,similarity:Contains 10 LRR (leucine-rich) repeats.,tissue specificity:Predominantly expression in forebrain regions including thalamus and cerebral cortex.,

## Validation Data



Western blot analysis of lysates from HeLa cells, primary antibody was diluted at 1:1000, 4° over night

## Contact information

Orders: [order@immunoway.com](mailto:order@immunoway.com)  
Support: [tech@immunoway.com](mailto:tech@immunoway.com)  
Telephone: 877-594-3616 (Toll Free), 408-747-0185  
Website: <http://www.immunoway.com>  
Address: 2200 Ringwood Ave San Jose, CA 95131 USA



Please scan the QR code to access additional product information:  
**LRRT1 Rabbit pAb**

