

## MAT2B Rabbit pAb

CatalogNo: YN3501

### Key Features

#### Host Species

- Rabbit

#### Reactivity

- Human, Mouse, Rat

#### Applications

- WB

#### MW

- 37kD (Calculated)

#### Isotype

- IgG

### Recommended Dilution Ratios

WB 1:500-2000

### Storage

**Storage\*** -15°C to -25°C/1 year (Do not lower than -25°C)

**Formulation** Liquid in PBS containing 50% glycerol, 0.5% BSA and 0.02% sodium azide.

### Basic Information

**Clonality** Polyclonal

### Immunogen Information

**Immunogen** Synthesized peptide derived from human MAT2B AA range: 23-73

**Specificity** This antibody detects endogenous levels of MAT2B at Human/Mouse/Rat

### Target Information

**Gene name** MAT2B TGR MSTP045 Nbla02999 UNQ2435/PRO4995

**Protein Name** MAT2B

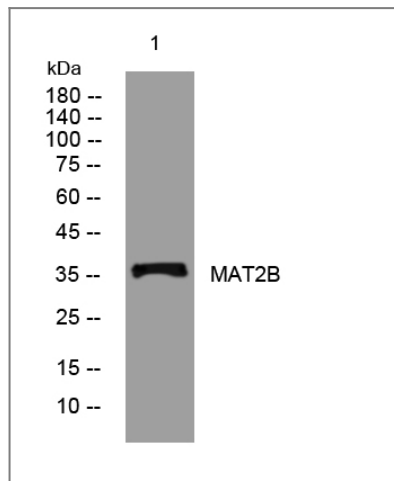
Organism	Gene ID	UniProt ID
Human	<a href="#">27430</a> ;	<a href="#">Q9NZL9</a> ;
Mouse	<a href="#">108645</a> ;	<a href="#">Q99LB6</a> ;
Rat	<a href="#">683630</a> ;	<a href="#">Q5U2R0</a> ;

**Cellular Localization** intracellular,nucleus,mitochondrion,cytosol,methionine adenosyltransferase complex,extracellular exosome,

**Tissue specificity** Widely expressed.

**Function** Function:Non-catalytic regulatory subunit of S-adenosylmethionine synthetase 2 (MAT2A), an enzyme that catalyzes the formation of S-adenosylmethionine from methionine and ATP. Regulates the activity of S-adenosylmethionine synthetase 2 by changing its kinetic properties, rendering the enzyme more susceptible to S-adenosylmethionine inhibition.,miscellaneous:Its expression in hepatoma cell lines may lead to increase DNA synthesis and thereby participate to cell proliferation.,pathway:Amino-acid biosynthesis; S-adenosyl-L-methionine biosynthesis; S-adenosyl-L-methionine from L-methionine: step 1/1.,similarity:Belongs to the dTDP-4-dehydrorhamnose reductase family. MAT2B subfamily.,subunit:Heterotetramer composed of 2 catalytic alpha subunits (alpha and alpha') (MAT2A) and 1 copy of beta subunit (MAT2B).,tissue specificity:Widely expressed.,

## Validation Data



Western blot analysis of lysates from DU145 cells, primary antibody was diluted at 1:1000, 4° over night

## Contact information

Orders: order@immunoway.com  
Support: tech@immunoway.com  
Telephone: 877-594-3616 (Toll Free), 408-747-0185  
Website: http://www.immunoway.com  
Address: 2200 Ringwood Ave San Jose, CA 95131 USA



Please scan the QR code  
to access additional  
product information:  
**MAT2B Rabbit pAb**

---

For Research Use Only. Not for Use in Diagnostic Procedures.

[Antibody](#) | [ELISA Kits](#) | [Protein](#) | [Reagents](#)